



# the strength of 70 years experience

For years Gebuwin has played an important part on the market of hoisting equipment, with hand driven winches taking pride of place. For these winches, we handle the engineering and production ourselves. In this way, we are easily able to respond to customer specific requests and we are unparalleled in our ability to provide custom-made solutions.

**G E B U W I N**  
metal products





# Content

available in stainless steel version (SS)

Company profile Gebuwin bv		<b>04</b>
Engineering		<b>05</b>
Worm gear winches		
WW250-500-1000-1500 ../D		<b>06</b>
WW250-500-1000-1500 ../2D		<b>08</b>
WW2000-3000-4000-5000 ../D		<b>10</b>
WW2000-3000-4000-5000 ../2D		<b>12</b>
WW2000-3000-4000-5000 ../D/FS		<b>14</b>
WW2000-3000-4000-5000 ../D/FSB		<b>16</b>
Electric worm gear winches		
EW125-250-500-990-1000-2000 ../.. (230V-50Hz)		<b>18</b>
EW125-250-500-990-1000-2000-3200 ../.. (400V-50Hz)		<b>20</b>
EP2000-3200-4000-5000-6300-8000-10000-12500-16000-20000 ../D (400V-50Hz)		<b>22</b>
Spur gear winches		
TL150 ..		<b>26</b>
HW200-800 ../..	●	<b>28</b>
TL300-600 ../..		<b>30</b>
TL1000-1500 ..	●	<b>32</b>
TC1000-1500 ../FS	●	<b>34</b>
Special winches		
Worm gear winch WB750 GR (belt winch)		<b>36</b>
Spur gear winch TL150 ZW (basket winch)		<b>38</b>
Battery driven worm gear winch WA200 GR/D		<b>40</b>
Swivel Davit SD125-250-500		<b>42</b>
Marine worm gear winch WW1500-3000-5000 D/MR	●	<b>44</b>
Spur gear box		<b>46</b>
Accessoires		
Cable set AR150-7500 ../...		<b>48</b>
Cranks AC1500-1501-5000		<b>50</b>
Pedestal KB500-1000-2000-3000-5000 GR		<b>52</b>
Winch power tool AM5000 (air motor) - EM5000		<b>54</b>

# Company profile Gebuwin bv

Gebuwin was founded in 1947 and is located in Winterswijk. We are your partner for hoisting and pulling products, with the emphasis on hand driven winches. In addition, we are the right place for your punching parts and turning parts, sub assemblies and complete end products.



## Facilities

We have approximately 2,000 m<sup>2</sup> floor space available for production. This is furnished with 3 CNC turning lathes, 5 milling machines, 1 NC saw, 5 stamping machines, 2 of which with automatic feed and a cutting shear. We also have 2 CO2 welding units and an electrostatic wet paint shop at our disposal, which uses a phosphating process to prepare the products for painting. To complete the production facilities, we have an assembly line with 3 assembling units and 1 final inspection station. We also have access over a testing installation which is used for static and dynamic testing of the winches.

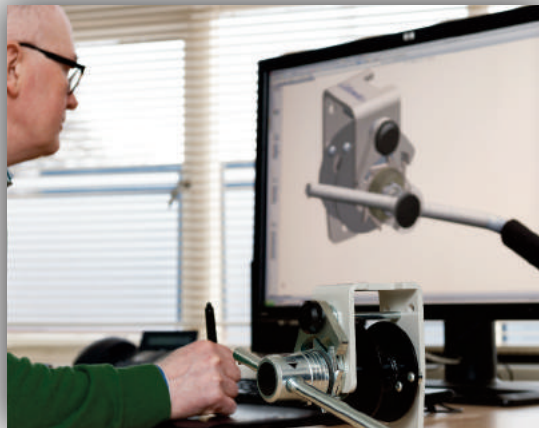


## Professionals

Gebuwin has a flat organisation structure with an informal character. With an enthusiastic team of about 12 professionals, we ensure that your product and all associated services are well taken care of. We consider it essential to have an excellent delivery reliability, service and flexibility, linked to a competitive price/quality ratio.



# Engineering



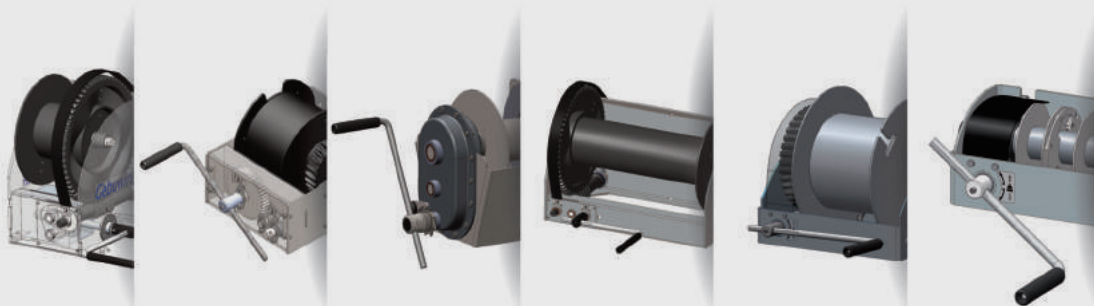
## Engineering

All of our product development is done in house. The product design is made with the aid of SolidWorks 3D drawing software. Mechanical engineering strength calculations are made with Mathcad and / or with the use of Mitcalc. Costing calculations are carried out by means of our ERP system. The assignment process is always according to a standard procedure which comprises a 4 part design phase namely the idea phase, the definition phase (requirement programme and 1st design sketches and necessary calculations), the actualization phase (construction/calculation and building the prototype) and the production phase (1st trial series preparatory to serialized production).

## Special winches

Whatever your wishes: Gebuwin thinks along with you and offers solutions. Apart from our standard delivery programme, we are the right place for custom made products. These products are developed by our in house engineering department. Are you keen to know what Gebuwin can do for you? Contact us, without any obligation. You can also ask for advice online, for which we would require some information.

As well as the European Machine Directive, the hand driven winches and the electrical winches are delivered with a CE mark, which is a European conformity certificate, using the following important norms: EN 131157, EN 12100, EN 14492, EN12385 and the EN 14121.



WW250-500-1000-1500 .. /D



# Worm gear winch

## Hand operated worm gear winch:

- robust and safe hoisting winch
- in compliance with EN13157, DIN 15020 and EX types ATEX 114 (94/9/EG)
- static safety factor 4
- square worm-wormwheel transmission and maintenance free bearings
- cable outlet upwards, downwards or at rear
- adjustable crank, with ergonomic grip
- easy to grease worm-wormwheel transmission
- load pressure brake with silent double ratchet system
- paint thickness is 60 - 80 Micron in 1 layer (in compliance with DIN/ISO 12944, C1M)
- as option:
  - zinc-plated finish (6 - 8 Micron)
  - ATEX certified  $\text{Ex}$  II 3 GD T4, suitable for zone 2 and 22
  - grooved drum
  - crank force limiter
  - multiple compartment cable drum
  - WW1000 and WW1500 are suitable for winch power tool AM5000

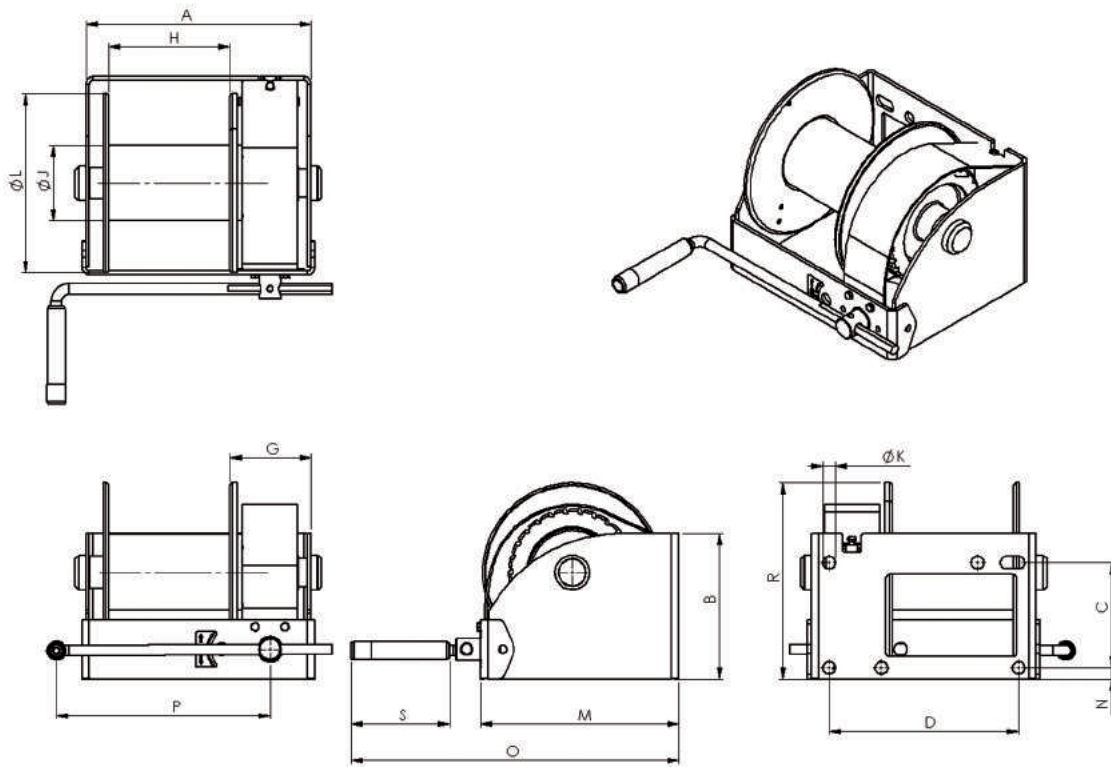


**GEBUWIN**  
metal products

Industrieweg 6 7102 DZ Winterswijk The Netherlands  
T +31 (0)543 532600 F +31 (0)543 532601  
info@gebuwin.com www.gebuwin.com



## Technical specifications WW250-500-1000-1500 ../D



Type	Mounting	Material finish	Remarks
WW250 GR / D	Wall, 4x M12 class 8.8	Painted finish	RAL 7035 (grey)
WW250 EV / D	Wall, 4x M12 class 8.8	Zinc-plated finish	
WW500 GR / D	Wall, 4x M12 class 8.8	Painted finish	RAL 7035 (grey)
WW500 EV / D	Wall, 4x M12 class 8.8	Zinc-plated finish	
WW1000 GR / D	Wall, 4x M16 class 8.8	Painted finish	RAL 7035 (grey)
WW1000 EV / D	Wall, 4x M16 class 8.8	Zinc-plated finish	
WW1500 GR / D	Wall, 4x M16 class 8.8	Painted finish	RAL 7035 (grey)
WW1500 EV / D	Wall, 4x M16 class 8.8	Zinc-plated finish	

Dimensions (mm)	A	B	C	D	G	H	J	K	L	M	N	O	P	R	S
WW250	238	145	100	192	107	105	48	14	160	191	15	365	280	171	132
WW500	269	160	115	223	108	135	70	14	190	221	15	393	325	193	132
WW1000	302	195	141	254	109	162	102	17	240	266	15	440	350	263	132
WW1500	302	250	178	254	109	162	102	17	240	278	15	451	350	306	132

Technical specifications	WW250	WW500	WW1000	WW1500
Capacity:				
1 <sup>st</sup> cable layer	250 kg	500 kg	1000 kg	1500 kg
Last cable layer	92 kg	224 kg	527 kg	846 kg
Crankforce 1 <sup>st</sup> cable position	6 daN	10 daN	13 daN	14 daN
Hoisting length by one rotation of crank , 1 <sup>st</sup> layer	17 mm	20 mm	13 mm	9 mm
Max.cable storage (one drum compartment)	104 m	78 m	63 m	41 m
Diameter cable (EN 12383-4)	4 mm	6 mm	8 mm	10 mm
Min. breaking load cable	9 kN	17 kN	34 kN	51 kN
Own weight	13 kg	16 kg	29 kg	28kg

WW250-500-1000-1500 ../2D



# Worm gear winch

## Hand operated worm gear winch:

- robust and safe hoisting winch
- suitable for two cables
- in compliance with EN13157, DIN 15020 and EX types ATEX 114 (94/9/EG)
- static safety factor 4
- square worm-wormwheel transmission and maintenance free bearings
- cable outlet upwards, downwards or at rear
- adjustable crank, with ergonomic grip
- easy to grease worm-wormwheel transmission
- load pressure brake with silent double ratchet system
- paint thickness is 60 - 80 Micron in 1 layer (in compliance with DIN/ISO 12944, C1M)
- as option:
  - zinc-plated finish (6 - 8 Micron)
  - ATEX certified  $\text{Ex}$  II 3 GD T4, suitable for zone 2 and 22
  - grooved drum
  - crank force limiter
  - multiple compartment cable drum
  - WW1000 and WW1500 are suitable for winch power tool AM5000



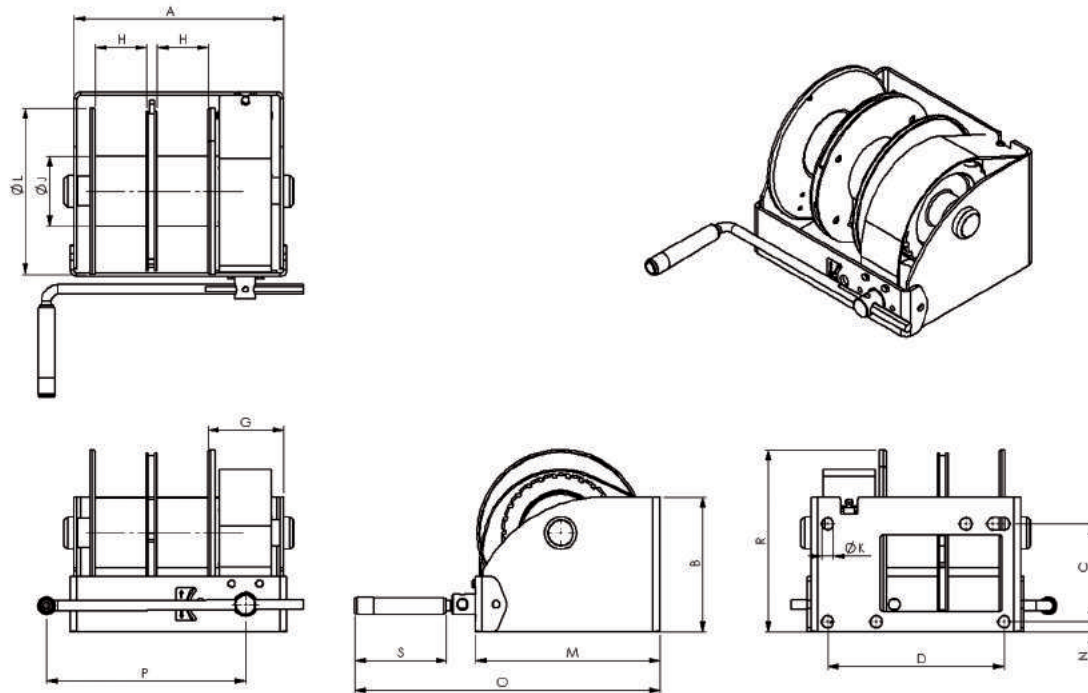
**GEBUWIN**  
metal products

Industrieweg 6 7102 DZ Winterswijk The Netherlands  
T +31 (0)543 532600 F +31 (0)543 532601  
info@gebuwin.com www.gebuwin.com





## Technical specifications WW250-500-1000-1500 ../2D



Type	Mounting	Material finish	Remarks
WW250 GR / 2D	Wall, 4x M12 class 8.8	Painted finish	RAL 7035 (grey)
WW250 EV / 2D	Wall, 4x M12 class 8.8	Zinc-plated finish	
WW500 GR / 2D	Wall, 4x M12 class 8.8	Painted finish	RAL 7035 (grey)
WW500 EV / 2D	Wall, 4x M12 class 8.8	Zinc-plated finish	
WW1000 GR / 2D	Wall, 4x M16 class 8.8	Painted finish	RAL 7035 (grey)
WW1000 EV / 2D	Wall, 4x M16 class 8.8	Zinc-plated finish	
WW1500 GR / 2D	Wall, 4x M16 class 8.8	Painted finish	RAL 7035 (grey)
WW1500 EV / 2D	Wall, 4x M16 class 8.8	Zinc-plated finish	

Dimensions (mm)	A	B	C	D	G	H	J	K	L	M	N	O	P	R	S
WW250	238	145	100	192	107	47	48	14	160	191	15	365	280	171	132
WW500	269	160	115	223	108	62	70	14	190	221	15	393	325	193	132
WW1000	302	195	141	254	109	73	102	17	240	266	15	440	350	263	132
WW1500	302	250	178	254	109	73	102	17	240	278	15	451	350	306	132

Technical specifications	WW250	WW500	WW1000	WW1500
Capacity:				
1 <sup>st</sup> cable layer	2 x 125 kg	2 x 250 kg	2 x 500 kg	2 x 750 kg
Last cable layer	2 x 46 kg	2 x 104 kg	2 x 243 kg	2 x 399 kg
Crankforce 1 <sup>st</sup> cable position	6 daN	10 daN	13 daN	14 daN
Hoisting length by one rotation of crank , 1 <sup>st</sup> layer	17 mm	20 mm	13 mm	9 mm
Max. cable storage (one drum compartment)	44 m	84 m	64 m	28 m
Diameter cable (EN 12383-4)	4 mm	4 mm	6 mm	8 mm
Min. breaking load cable	9 kN	9 kN	17 kN	34 kN
Own weight	13,5 kg	16,5 kg	27,5 kg	28,5 kg

WW2000-3000-4000-5000-7500 ..D



## Worm gear winch

### Hand operated worm gear winch:

- robust and safe hoisting winch with two speeds
- in compliance with EN13157, DIN 15020 and EX types ATEX 114 (94/9/EG)
- static safety factor 4
- square worm-wormwheel transmission and maintenance free bearings
- cable outlet upwards, downwards or at rear
- adjustable crank, with ergonomic grip
- easy to grease worm-wormwheel transmission
- load pressure brake with silent double ratchet system
- paint thickness is 60 - 80 Micron in 1 layer (in compliance with DIN/ISO 12944, C1M)
- as option:
  - zinc-plated finish (6 - 8 Micron)
  - ATEX certified  $\text{Ex}$  II 3 GD T4, suitable for zone 2 and 22
  - grooved drum
  - multiple compartment cable drum
  - suitable for winch power tool AM5000

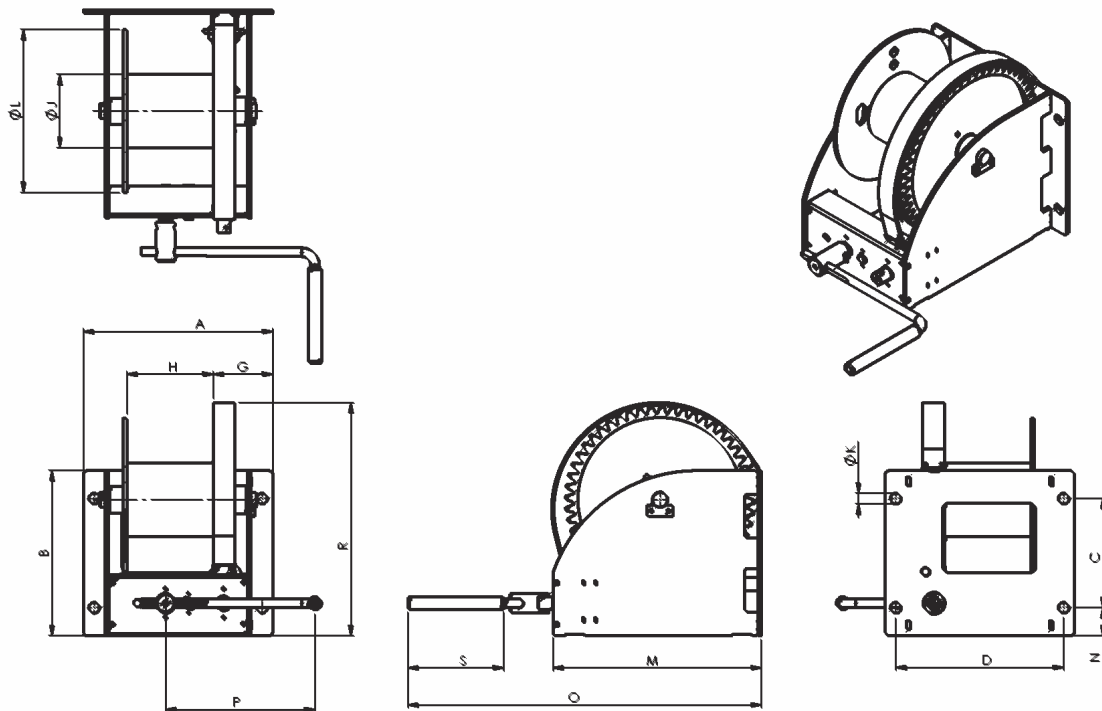


**GEBUWIN**  
metal products

Industrieweg 6 7102 DZ Winterswijk The Netherlands  
T +31 (0)543 532600 F +31 (0)543 532601  
info@gebuwin.com www.gebuwin.com



## Technical specifications WW2000-3000-4000-5000-7500 .. /D



Type	Mounting	Material finish	Remarks
WW2000 GR / D	Wall, 4x M20 class 8.8	Painted finish	RAL 7035 (grey)
WW2000 EV / D	Wall, 4x M20 class 8.8	Zinc-plated finish	
WW3000 GR / D	Wall, 4x M20 class 8.8	Painted finish	RAL 7035 (grey)
WW3000 EV / D	Wall, 4x M20 class 8.8	Zinc-plated finish	
WW4000 GR / D	Wall, 4x M20 class 8.8	Painted finish	RAL 7035 (grey)
WW4000 EV / D	Wall, 4x M20 class 8.8	Zinc-plated finish	
WW5000 GR / D	Wall, 4x M20 class 8.8	Painted finish	RAL 7035 (grey)
WW5000 EV / D	Wall, 4x M20 class 8.8	Zinc-plated finish	
WW7500 GR/D	Wall, 4x M20 class 8.8	Painted finish	RAL 7035 (grey)
WW7500 EV/D	Wall, 4x M20 class 8.8	Zinc-plated finish	

Dimensions (mm)	A	B	C	D	G	H	J	K	L	M	N	O	P	R	S
WW2000	410	310	196	360	137	177	133	25	312	372	57	705	380	434	220
WW3000	436	380	251	386	137	203	168	25	375	480	65	813	380	536	220
WW4000	436	380	251	386	137	203	168	25	375	480	65	813	380	536	220
WW5000	436	467	316	386	137	200	219	25	437	515	75	847	380	618	220
WW7500	510	500	350	455	189	202	245	25	630	635	75	968	380	748	220

Technical specifications	WW2000	WW3000	WW4000	WW5000	WW7500
Capacity:					
1 <sup>st</sup> cable layer	2000 kg	3000 kg	4000 kg	5000 kg	7500 kg
Last cable layer	1038 kg	1667 kg	2282 kg	3276 kg	3748 kg
Crankforce 1 <sup>st</sup> cable layer	24 (11) daN	31 (14) daN	30 (13) daN	73 (14) daN	78 (15) daN
Hoisting length by one rotation of crank , 1 <sup>st</sup> layer	12 (5) mm	11 (5) mm	11 (2) mm	13 (3) mm	11 (2) mm
Max. cable storage per compartment	75 m	68 m	53 m	43 m	72 m
Diameter cable (EN 12383-4)	11 mm	14 mm	16 mm	18 mm	22 mm
Min. breaking force of cable	63 kN	102 kN	133 kN	168 kN	251 kN
Own weight	60 kg	78 kg	80 kg	117 kg	190 kg

subject to changes


www.gebuwin.com

WW2000-3000-4000-5000 ../2D



## Worm gear winch

### Hand operated worm gear winch:

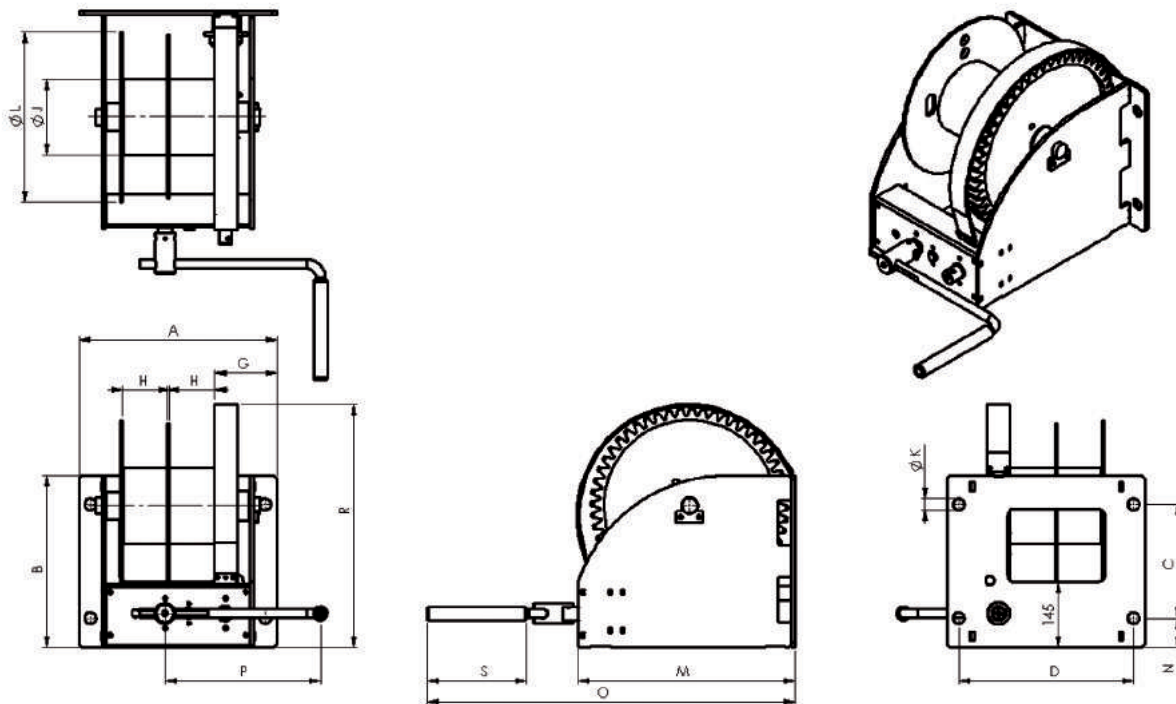
- robust and safe hoisting winch with two speeds
- suitable for two cables
- in compliance with EN13157, DIN 15020 and EX types ATEX 114 (94/9/EG)
- static safety factor 4
- square worm-wormwheel transmission and maintenance free bearings
- cable outlet upwards, downwards or at rear
- adjustable crank, with ergonomic grip
- easy to grease worm-wormwheel transmission
- load pressure brake with silent double ratchet system
- paint thickness is 60 - 80 Micron in 1 layer (in compliance with DIN/ISO 12944, C1M)
- as option:
  - zinc-plated finish (6 - 8 Micron)
  - ATEX certified  II 3 GD T4, suitable for zone 2 and 22
  - grooved drum
  - multi compartment cable drum
  - suitable for winch power tool AM5000



**GEBUWIN**  
metal products



## Technical specifications WW2000-3000-4000-5000 ../2D

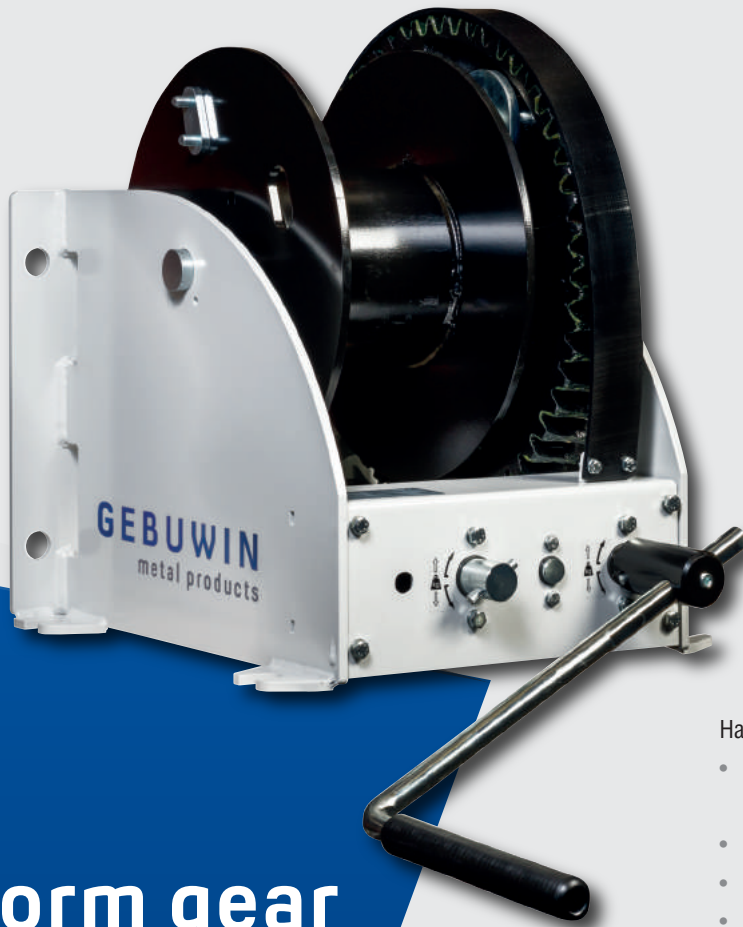


Type	Mounting	Material finish	Remarks
WW2000 GR / 2D	Wall, 4x M20 class 8.8	Painted finish	RAL 7035 (grey)
WW2000 EV / 2D	Wall, 4x M20 class 8.8	Zinc-plated finish	
WW3000 GR / 2D	Wall, 4x M20 class 8.8	Painted finish	RAL 7035 (grey)
WW3000 EV / 2D	Wall, 4x M20 class 8.8	Zinc-plated finish	
WW4000 GR / 2D	Wall, 4x M20 class 8.8	Painted finish	RAL 7035 (grey)
WW4000 EV / 2D	Wall, 4x M20 class 8.8	Zinc-plated finish	
WW5000 GR / 2D	Wall, 4x M20 class 8.8	Painted finish	RAL 7035 (grey)
WW5000 EV / 2D	Wall, 4x M20 class 8.8	Zinc-plated finish	

Dimensions (mm)	A	B	C	D	G	H	J	K	L	M	N	O	P	R	S
WW2000	410	310	196	360	137	86	133	25	312	372	57	705	380	434	220
WW3000	436	380	251	386	137	99	168	25	375	480	65	813	380	536	220
WW4000	436	380	251	386	137	99	168	25	375	480	65	813	380	535	220
WW5000	436	467	316	386	137	96	219	25	437	515	75	847	380	618	220


Technical specifications	WW2000	WW3000	WW4000	WW5000
Capacity:				
1 <sup>st</sup> cable layer	2 x 1000 kg	2 x 1500 kg	2 x 2000 kg	2 x 2500 kg
Last cable layer	2 x 519 kg	2 x 833 kg	2 x 1141 kg	2 x 1638 kg
Crankforce 1 <sup>st</sup> cable layer	24 (11) daN	31 (14) daN	30 (13) daN	73 (14) daN
Hoisting length by one rotation of crank , 1 <sup>st</sup> layer	12 (5) mm	11 (5) mm	11 (2) mm	13 (3) mm
Max. cable storage per compartment	68 m	66 m	53 m	35 m
Diameter cable (EN 12384-4)	8 mm	10 mm	11 mm	14 mm
Min. breaking force of cable	34 kN	51 kN	63 kN	102 kN
Own weight	62 kg	80 kg	82 kg	119 kg

WW2000-3000-4000-5000 ../D/FS



## Worm gear winch

### Hand operated worm gear winch:

- robust and safe hoisting or pulling winch with two speeds
- pulling capacity is approx. 2.5x hoisting capacity
- free spooling cable drum
- in compliance with EN13157, DIN 15020 and EX types ATEX 114 (94/9/EG)
- static safety factor 4
- square worm-wormwheel transmission and maintenance free bearings
- cable outlet upwards, downwards or at rear
- adjustable crank, with ergonomic grip
- easy to grease worm-wormwheel transmission
- load pressure brake with silent double ratchet system
- paint thickness is 60 - 80 Micron in 1 layer (in compliance with DIN/ISO 12944, C1M)
- as option:
  - zinc-plated finish (6 - 8 Micron)
  - ATEX certified  II 3 GD T4, suitable for zone 2 and 22
  - grooved drum
  - multiple compartment cable drum
  - suitable for winch power tool AM5000

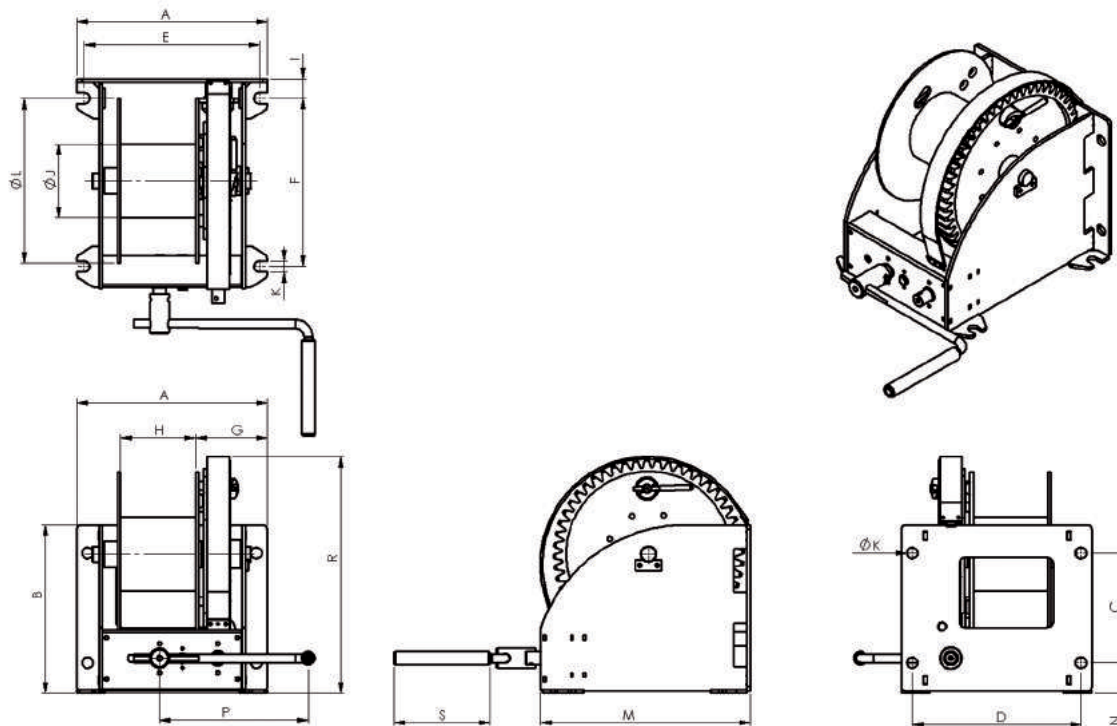


**GEBUWIN**  
metal products

Industrieweg 6 7102 DZ Winterswijk The Netherlands  
T +31 (0)543 532600 F +31 (0)543 532601  
info@gebuwin.com www.gebuwin.com



## Technical specifications WW2000-3000-4000-5000 ../D/FS

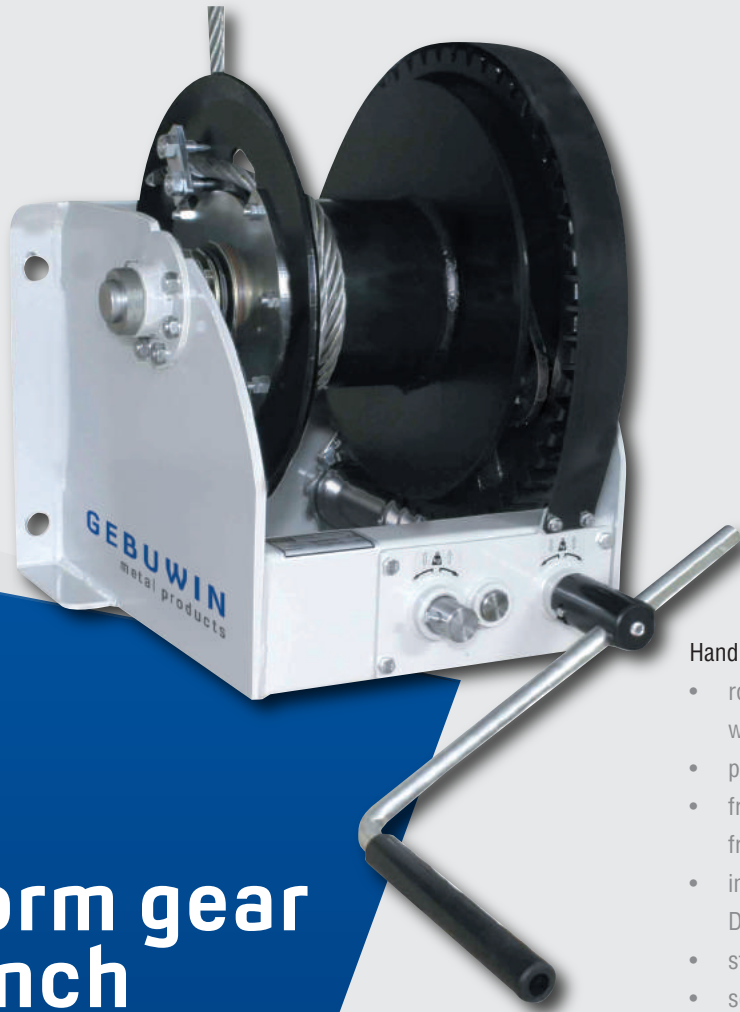


Type	Mounting	Material finish	Remarks
WW2000 GR / D / FS	Wall / Floor, 4x M20 class 8.8	Painted finish	RAL 7035 (grey)
WW2000 EV / D / FS	Wall / Floor, 4x M20 class 8.8	Zinc-plated finish	
WW3000 GR / D / FS	Wall / Floor, 4x M20 class 8.8	Painted finish	RAL 7035 (grey)
WW3000 EV / D / FS	Wall / Floor, 4x M20 class 8.8	Zinc-plated finish	
WW4000 GR / D / FS	Wall / Floor, 4x M20 class 8.8	Painted finish	RAL 7035 (grey)
WW4000 EV / D / FS	Wall / Floor, 4x M20 class 8.8	Zinc-plated finish	
WW5000 GR / D / FS	Wall / Floor, 4x M20 class 8.8	Painted finish	RAL 7035 (grey)
WW5000 EV / D / FS	Wall / Floor, 4x M20 class 8.8	Zinc-plated finish	

Dimensions (mm)	A	B	C	D	E	F	G	H	I	J	K	L	M	N	P	R	S
WW2000	410	310	196	360	376	279	166	147	42	133	25	312	372	62	380	437	220
WW3000	436	385	251	386	401	385	164	172	44	168	25	375	480	70	380	541	220
WW4000	436	385	251	386	401	385	164	172	44	168	25	375	480	70	380	541	220
WW5000	436	472	316	386	401	420	171	168	44	219	25	437	515	80	380	625	220

Technical specifications	WW2000	WW3000	WW4000	WW5000
Capacity:				
1 <sup>st</sup> cable layer	2000 kg	3000 kg	4000 kg	5000 kg
Last cable layer	1038 kg	1667 kg	2282 kg	3276 kg
Crankforce 1 <sup>st</sup> cable layer	24 (11) daN	31 (14) daN	30 (13) daN	73 (14) daN
Hoisting length by one rotation of crank , 1 <sup>st</sup> layer	12 (5) mm	11 (5) mm	11 (2) mm	13 (3) mm
Max. cable storage	59 m	57 m	43 m	33 m
Diameter cable (EN 12383-4)	11 mm	14 mm	16 mm	18 mm
Min. breaking force of cable	63 kN	102 kN	133 kN	168 kN
Own weight	63 kg	82 kg	84 kg	122 kg

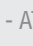
WW2000-3000-4000-5000 ../D/FSB



## Worm gear winch



### Hand operated worm gear winch:

- robust and safe hoisting or pulling winch with two speeds
- pulling capacity is approx. 2.5x hoisting capacity
- free spooling cable drum with an adjustable friction brake for controlled cable unwinding
- in compliance with EN13157, DIN 15020 and EX types ATEX 114 (94/9/EG)
- static safety factor 4
- square worm-wormwheel transmission and maintenance free bearings
- cable outlet upwards, downwards or at rear
- adjustable crank, with ergonomic grip
- easy to grease worm-wormwheel transmission
- load pressure brake with silent double ratchet system
- paint thickness is 60 - 80 Micron in 1 layer (in compliance with DIN/ISO 12944, C1M)
- as option:
  - zinc-plated finish (6 - 8 Micron)
  - ATEX certified  II 3 GD T4, suitable for zone 2 and 22
  - grooved drum
  - multiple compartment cable drum
  - suitable for winch power tool AM5000

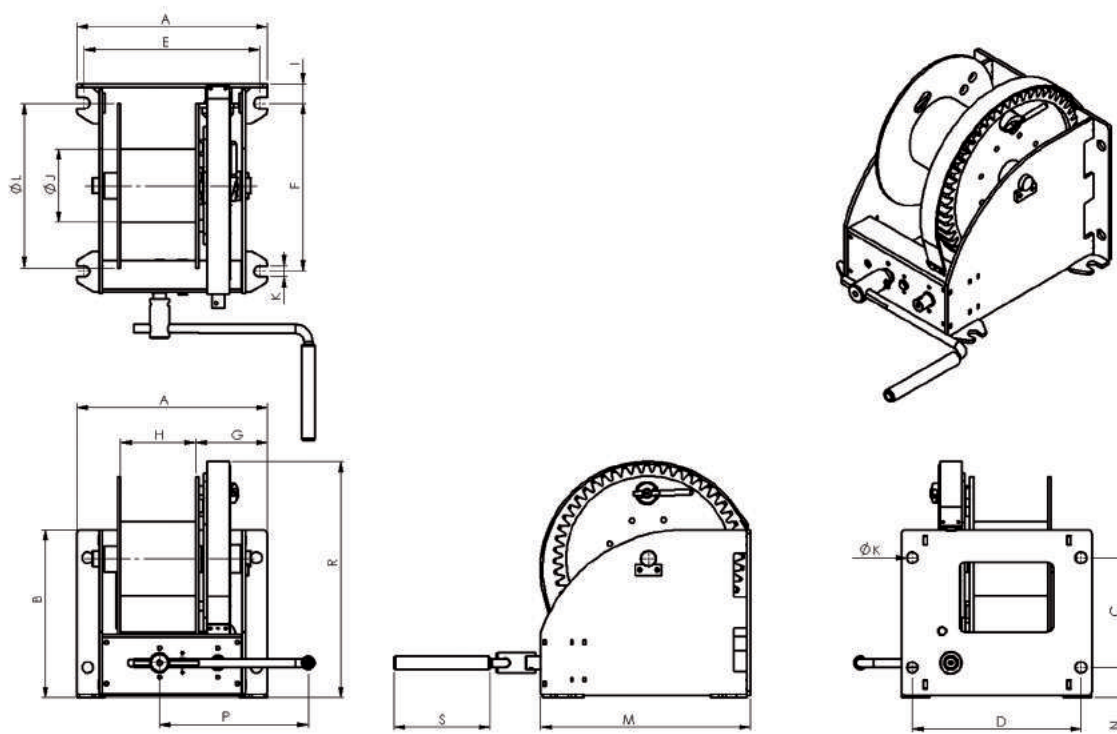
**GEBUWIN**  
metal products

Industrieweg 6 7102 DZ Winterswijk The Netherlands  
T +31 (0)543 532600 F +31 (0)543 532601  
info@gebuwin.com www.gebuwin.com





## Technical specifications WW2000-3000-4000-5000 .. / D / FSB

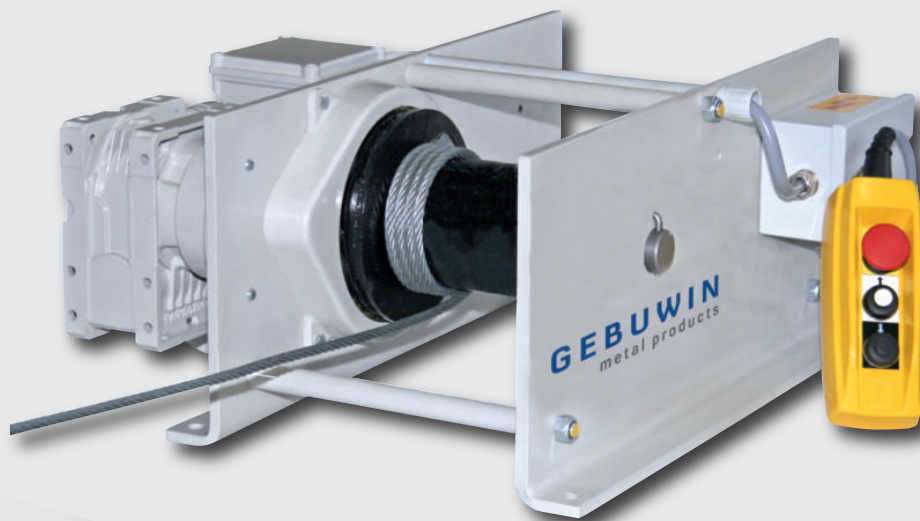


Type	Mounting	Material finish	Remarks
WW2000 GR / D / FSB	Wall / Floor, 4x M20 class 8.8	Painted finish	RAL 7035 (grey)
WW2000 EV / D / FSB	Wall / Floor, 4x M20 class 8.8	Zinc-plated finish	
WW3000 GR / D / FSB	Wall / Floor, 4x M20 class 8.8	Painted finish	RAL 7035 (grey)
WW3000 EV / D / FSB	Wall / Floor, 4x M20 class 8.8	Zinc-plated finish	
WW4000 GR / D / FSB	Wall / Floor, 4x M20 class 8.8	Painted finish	RAL 7035 (grey)
WW4000 EV / D / FSB	Wall / Floor, 4x M20 class 8.8	Zinc-plated finish	
WW5000 GR / D / FSB	Wall / Floor, 4x M20 class 8.8	Painted finish	RAL 7035 (grey)
WW5000 EV / D / FSB	Wall / Floor, 4x M20 class 8.8	Zinc-plated finish	

Dimensions (mm)	A	B	C	D	E	F	G	H	I	J	K	L	M	N	P	R	S
WW2000	432	315	196	382	392	279	166	146	42	133	25	330	372	62	380	437	220
WW3000	458	385	251	408	423	385	164	172	44	168	25	375	480	70	380	541	220
WW4000	458	385	251	408	423	385	164	172	44	168	25	375	480	70	380	541	220
WW5000	458	472	316	408	423	420	171	168	44	219	25	437	515	80	380	625	220

Technical specifications	WW2000	WW3000	WW4000	WW5000
Capacity:				
1 <sup>st</sup> cable layer	2000 kg	3000 kg	4000 kg	5000 kg
Last cable layer	1038 kg	1667 kg	2282 kg	3276 kg
Crankforce 1 <sup>st</sup> cable layer	24 (11) daN	31 (14) daN	30 (13) daN	73 (14) daN
Hoisting length by one rotation of crank , 1 <sup>st</sup> layer	12 (5) mm	11 (5) mm	11 (2) mm	13 (3) mm
Max. friction on brake	340 Nm	340 Nm	340 Nm	340 Nm
Max. cable storage	59 m	57 m	43 m	33 m
Diameter cable (EN 12383-4)	11 mm	14 mm	16 mm	18 mm
Min. breaking force of cable	63 kN	102 kN	133 kN	168 kN
Own weight	66 kg	85 kg	87 kg	125 kg

EW125-250-500-990-1000-2000 ../..



# Electric worm gear winch

230V-50Hz



Electric operated worm gear winch 230V-50Hz:

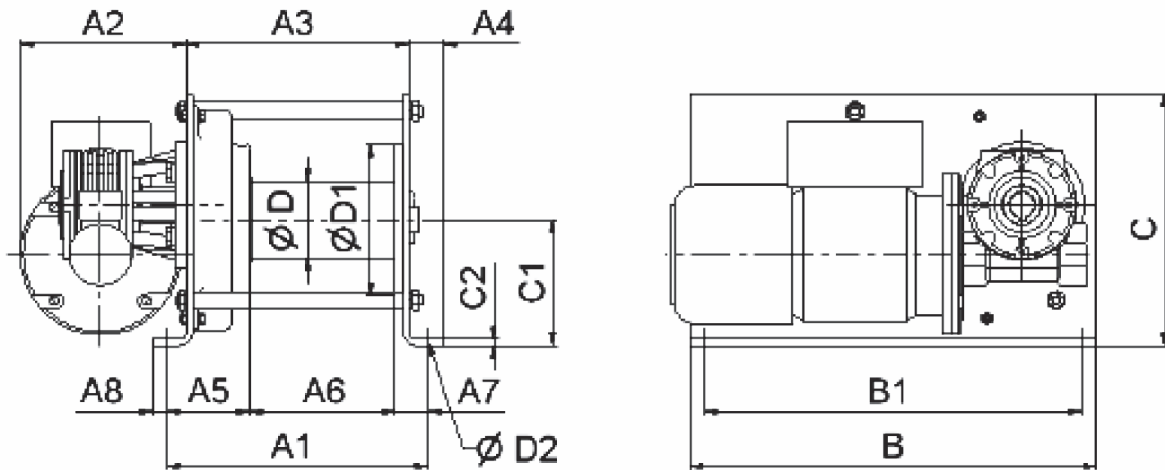
- robust and safe winch
- serial model as pulling winch
- maintenance-free ball bearing
- enclosure IP54, insulation class B
- standard overload protection from 1000 kg - 2000 kg
- pendant control switch with 1 m control cable
- operation mode S3 - 40% - 120 c/h
- as option:
  - available as hoisting winch (limitswitch and low voltage control required)
  - increase of cable storage by 10 m
  - grooved drum
  - 2 cable compartments
  - disengaging clutch (not for 125 kg model)
  - wall mounted control switch
  - operational limit switch for external installation
  - electric overload protection for 125 kg - 990 kg
  - low voltage 42V control
  - double speed (), only possible for 125, 250 and 500 kg
  - radio control
  - frequency control
  - ATEX certified  $\text{Ex}$  II 3 GD T4, suitable for zone 2 and 22

**GEBUWIN**  
metal products

Industrieweg 6 7102 DZ Winterswijk The Netherlands  
T +31 (0)543 532600 F +31 (0)543 532601  
info@gebuwin.com www.gebuwin.com



## Technical specifications 230V-50Hz EW125-250-500-990-1000-2000 ../..



Type	Mounting	Material finish	Remarks
EW125 D / 230V	Ground, 4x M8 class 4.6	Painted finish	RAL 7035 (grey)
EW250 D / 230V	Ground, 4x M10 class 4.6	Painted finish	RAL 7035 (grey)
EW500 D / 230V	Ground, 4x M10 class 4.6	Painted finish	RAL 7035 (grey)
EW990 D / 230V	Ground, 4x M12 class 4.6	Painted finish	RAL 7035 (grey)
EW1000 D / 230V	Ground, 4x M12 class 4.6	Painted finish	RAL 7035 (grey)
EW2000 D / 230V	Ground, 4x M16 class 4.6	Painted finish	RAL 7035 (grey)

Dimensions (mm)	A1	A2	A3	A4	A5	A6	A7	A8	B	B1	C	C1	C2	D	D1	D2
EW125	205	195	171	30	43	135	27	13	405	375	215	140	4	60	130	9
EW250	260	195	222	34	78	150	32	15	405	375	250	125	6	60	150	11
EW500	260	195	222	34	82	145	33	15	405	375	250	125	6	76	150	11
EW990	345	240	289	45	99	198	48	17	575	535	270	155	10	108	180	13
EW1000	345	240	289	45	99	198	48	17	575	535	270	155	10	108	180	13
EW2000	440	240	358	61	173	200	67	20	600	550	385	171	15	146	245	17

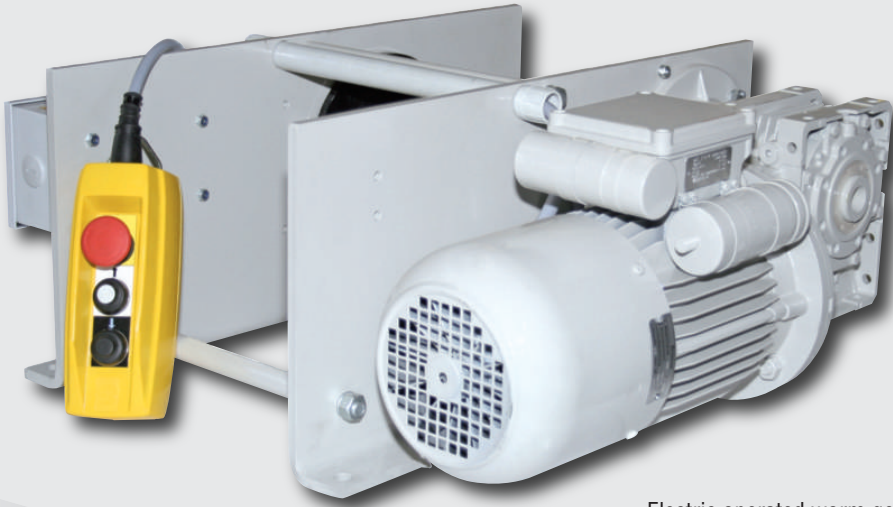
Technical specifications	EW125	EW250	EW500	EW990	EW1000	EW2000
Capacity:						
1 <sup>st</sup> cable layer	kg	125	250	500	990	1000
Last cable layer	kg	90	180	340	780	1560
Cable speed 1 <sup>st</sup> layer	m/min	7,8 (15)	5 (10)	2,5 (5)	4,5	2,3
Diameter cable	mm	4	4	6	8	11
Max. cable storage	m	32	35	30	30	30
Min. breaking load cable	kN	5	9	18	36	70
Motor output	kW	0,37 (0,75)	0,37 (0,75)	0,37 (0,75)	1,3	1,3
Current	A	4 (5,2)	4 (5,2)	4 (5,2)	9,1	9,1
Own weight	kg	27	37	40	88	160

( ) = version with double cable speed

subject to changes

www.gebuwin.com

EW125-250-500-990-1000-2000-3200 ../..



# Electric worm gear winch

400V-50Hz



Electric operated worm gear winch 400V-50Hz:

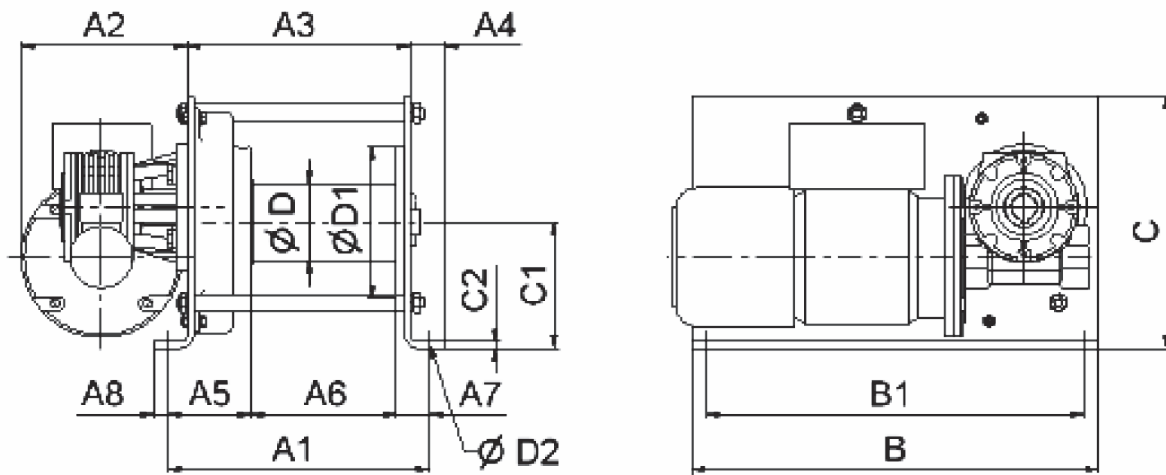
- robust and safe winch
- serial model as pulling winch
- maintenance-free ball bearing
- enclosure IP54, insulation class B
- standard overload protection from 1000 kg - 3200 kg
- pendant control switch with 1 m control cable
- operation mode S3 - 40% - 120 c/h
- as option:
  - available as hoisting winch (limitswitch and low voltage control required)
  - increase of cable storage by 10 m
  - grooved drum
  - 2 cable compartments
  - disengaging clutch (not for 125 kg model)
  - wall mounted control switch
  - operational limit switch for external installation
  - electric overload protection for 125 kg - 990 kg
  - low voltage 42V control
  - two speeds
  - double speed ()
  - radio control
  - frequency control
  - enclosure up to IP66
  - ATEX certified  $\text{Ex}$  II 3 GD T4, suitable for zone 2 and 22

**G E B U W I N**  
metal products

Industrieweg 6 7102 DZ Winterswijk The Netherlands  
T +31 (0)543 532600 F +31 (0)543 532601  
info@gebuwin.com www.gebuwin.com



## Technical specifications 400V-50Hz EW125-250-500-990-1000-2000-3200 ../..



Type	Mounting	Material finish	Remarks
EW125 D / 400V	Ground, 4x M8 class 4.6	Painted finish	RAL 7035 (grey)
EW250 D / 400V	Ground, 4x M10 class 4.6	Painted finish	RAL 7035 (grey)
EW500 D / 400V	Ground, 4x M10 class 4.6	Painted finish	RAL 7035 (grey)
EW990 D / 400V	Ground, 4x M12 class 4.6	Painted finish	RAL 7035 (grey)
EW1000 D / 400V	Ground, 4x M12 class 4.6	Painted finish	RAL 7035 (grey)
EW2000 D / 400V	Ground, 4x M16 class 4.6	Painted finish	RAL 7035 (grey)
EW3200 D / 400V	Ground, 4x M16 class 4.6	Painted finish	RAL 7035 (grey)

Dimensions (mm)	A1	A2	A3	A4	A5	A6	A7	A8	B	B1	C	C1	C2	D	D1	D2
EW125	205	165	171	30	43	135	27	13	405	375	215	140	4	60	130	9
EW250	260	165	222	34	78	150	32	15	405	375	250	125	6	60	150	11
EW500	260	165	222	34	82	145	33	15	405	375	250	125	6	76	150	11
EW990	345	216	289	45	99	198	48	17	575	535	270	155	10	108	180	13
EW1000	345	216	289	45	99	198	48	17	575	535	270	155	10	108	180	13
EW2000	440	216	358	61	173	200	67	20	600	550	385	171	15	146	245	17
EW3200	525	198	443	61	193	257	75	20	600	550	405	191	15	216	370	17

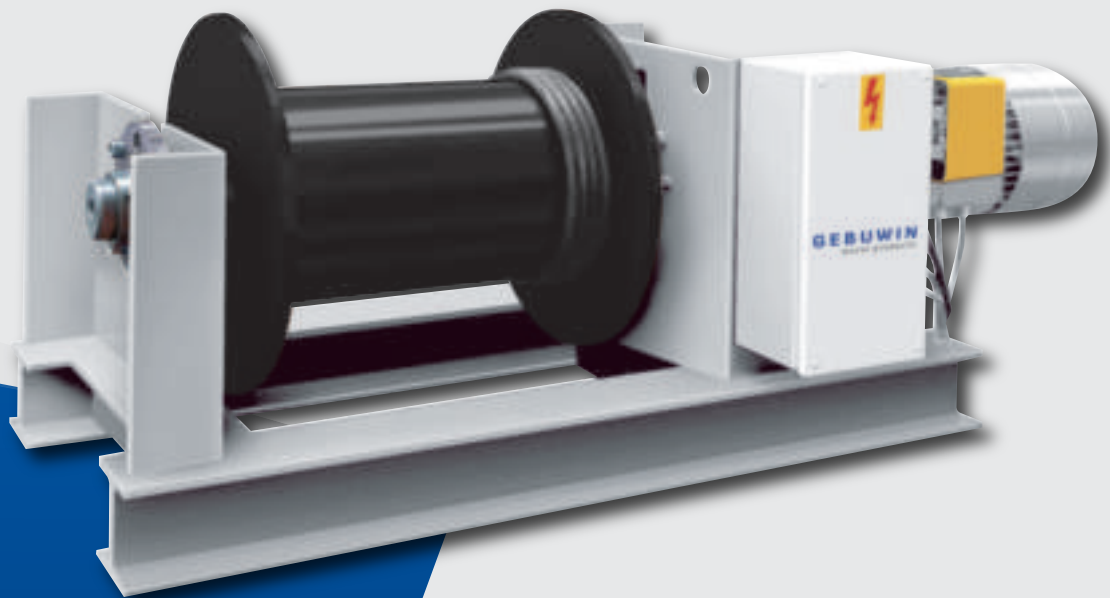
Technical specifications	EW125	EW250	EW500	EW990	EW1000	EW2000	EW3200
Capacity:							
1 <sup>st</sup> cable layer	kg	125	250	500	990	1000	3200
Last cable layer	kg	90	180	340	780	780	2500
Cable speed 1 <sup>st</sup> layer	m/min	7,8 (15)	5 (10)	2,5 (5)	4,5 (9)	4,5 (9)	4,5
Diameter cable	mm	4	4	6	8	8	16
Max. cable storage	m	32	35	30	30	30	37
Min. breaking load cable	kN	5	9	18	36	36	114
Motor output	kW	0,37 (0,75)	0,37 (0,75)	0,37 (0,75)	1,3 (2,6)	1,3 (2,6)	3
Current	A	1,1 (1,9)	1,1 (1,9)	1,1 (1,9)	3,2 (6)	3,2 (6)	7
Own weight	kg	27	37	40	88	88	210

( ) = version with double cable speed

subject to changes

www.gebuwin.com

EP2000-3200-4000-5000-6300-8000-10000-12500-16000-20000 ../D



# Electric planetary gear winch

400V-50Hz

## Electric wire rope winch for pulling\*

This new state-of-the-art winch offers high performance at economic cost. The basic winch is of robust construction and features a large wire rope capacity and is suitable for a wide range of use. A variety of optional applications are available to offer the flexibility that might be required. Each type is available in 8 speeds (S1, S2 and S3).

\*As option available as hoisting winch - Limit switch required.

**GEBUWIN**  
metal products

Industrieweg 6 7102 DZ Winterswijk The Netherlands  
T +31 (0)543 532600 F +31 (0)543 532601  
info@gebuwin.com www.gebuwin.com

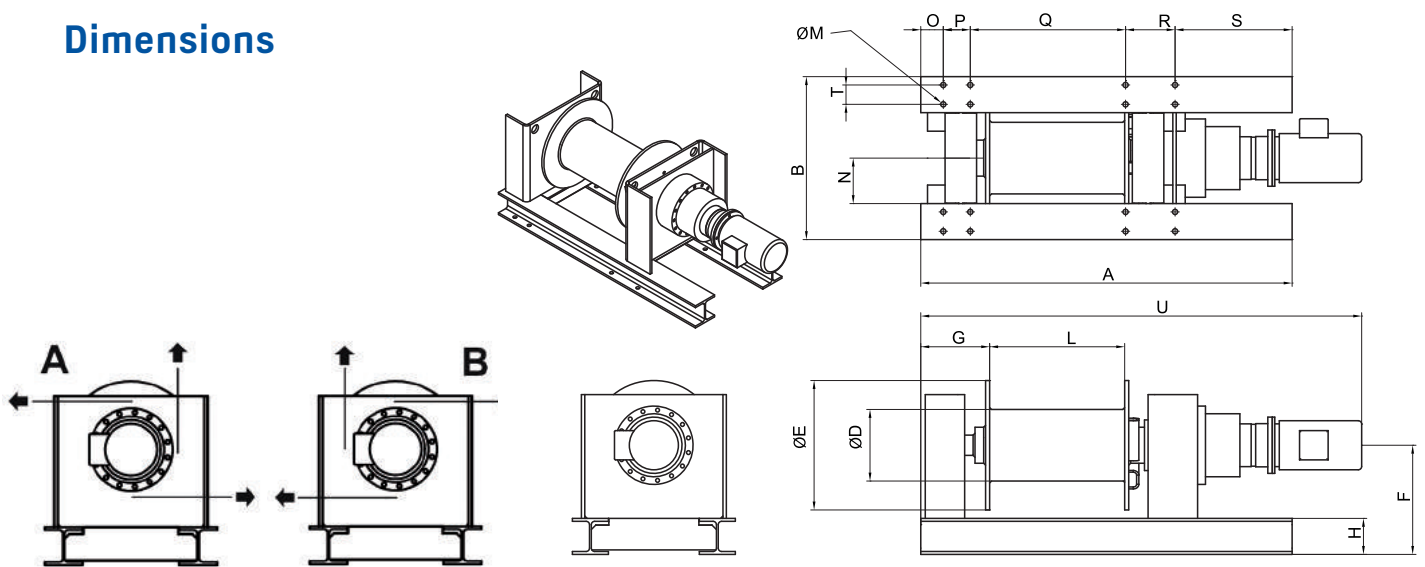


# Technical specifications EP2000-3200-4000-5000-6300-8000-10000-12500-16000-20000 ../D

Type	Capacity		Wirerope		Motor		Wirerope speed		Wirerope storage		Weight without wirerope	
	layer		Ø min. breaking load cable	mm	kN	motor output kW	nominal current A	layer		m		m
	1	5						1	5			
	kg	kg					m/min	m/min			kg	
EP2000 / D / S1						1,4/5,5	5,6/12,5	3,5/1,4	5,5/22			260
EP2000 / D / S2	2000	1300	10	71		2/8,5	6,5/18,2	5,5/23	8,5/36,5	20	135	300
EP2000 / D / S3						2,5/12	9/28	8,5/35	13,5/54,5			365
EP3200 / D / S1						1,4/5,5	5,6/12,5	2/9	3,5/14			305
EP3200 / D / S2	3200	2050	12	114		2/8,5	6,5/18,2	3/12,5	5/20	23	160	345
EP3200 / D / S3						2,5/12	9/28	4,5/19	7/30			410
EP4000 / D / S1						1,4/5,5	5,6/12,5	1,5/6	2,5/10			310
EP4000 / D / S2	4000	2500	13	142		2/8,5	6,5/18,2	2,5/11	4/16,5	22	150	350
EP4000 / D / S3						2,5/12	9/28	3,5/14	5,5/22			415
EP5000 / D / S1						1,4/5,5	5,6/12,5	1/5	2/7,5			415
EP5000 / D / S2	5000	3200	14	178		2/8,5	6,5/18,2	2/8	3/12,5	25	165	450
EP5000 / D / S3						2,5/12	9/28	3/12	5/19,5			515
EP6300 / D / S1						1,4/5,5	5,6/12,5	1/4	2/7			455
EP6300 / D / S2	6300	4050	16	224		2/8,5	6,5/18,2	1,7/7	2,5/10,5	20	155	495
EP6300 / D / S3						2,5/12	9/28	2,5/10	4/15,5			555
EP8000 / D / S1						1,4/5,5	5,6/12,5	1/3,5	1,4/5,5			685
EP8000 / D / S2	8000	5200	18	284		2/8,5	6,5/18,2	1,3/5,5	2/8	22	155	725
EP8000 / D / S3						2,5/12	9/28	1,9/7,5	2,5/11,5			785
EP10000 / D / S1						1,4/5,5	5,6/12,5	0,7/2,5	1,1/4,3			700
EP10000 / D / S2	10000	6500	20	355		2/8,5	6,5/18,2	1/4	1,6/6,5	22	155	740
EP10000 / D / S3						2,5/12	9/28	1,5/6	2,3/9			810
EP12500 / D / S1						1,4/5,5	5,6/12,5	0,6/2,2	0,9/3,5			815
EP12500 / D / S2	12500	8200	22	444		2/8,5	6,5/18,2	0,3/3,5	1,3/5,4	22	160	855
EP12500 / D / S3						2,5/12	9/28	1,2/4,5	1,8/7			915
EP16000 / D / S1						1,4/5,5	5,6/12,5	0,5/1,8	0,7/2,8			1210
EP16000 / D / S2	16000	10400	25	568		2/8,5	6,5/18,2	0,6/2,5	0,9/3,8	22	160	1250
EP16000 / D / S3						2,5/12	9/28	0,9/3,5	1,3/5,3			1320
EP20000 / D / S1						2/8,5	6,5/18,2	0,5/21	0,8/3,2			1320
EP20000 / D / S2	20000	13000	28	710		2,5/12	9,28	0,8/3	1,1/4,6	22	160	1390

Operation current 400 V/50 Hz, Enclosure IP 55, Isolation class F, 53-25% - 33-40%  
 Recommended wireropees should be suitable for the wirerope diameters and the breaking loads mentioned in the table above.

# Dimensions



Type	main dimensions in mm																		
	A	B	D	E	F	G	H	L	M	N	O	P	Q	R	S	T	U		
EP2000 D / S1																	1530		
EP2000 D / S2	1450	544	133	300	320	215	100	530	13	172	70	100	700	100	480	56	1630		
EP2000 D / S3																	1770		
EP3200 D / S1																	1650		
EP3200 D / S2	1450	544	159	320	320	215	100	610	13	172	70	100	700	100	480	56	1750		
EP3200 D / S3																	1940		
EP4000 D / S1																	1620		
EP4000 D / S2	1450	544	178	350	320	215	100	580	13	172	70	100	700	100	480	56	1720		
EP4000 D / S3																	1910		
EP5000 D / S1																	1720		
EP5000 D / S2	1530	620	203	400	370	204	120	610	17	190	90	75	700	75	590	70	1770		
EP5000 D / S3																	1960		
EP6300 D / S1																	1790		
EP6300 D / S2	1530	620	219	430	370	204	120	610	17	190	90	75	700	75	590	70	1880		
EP6300 D / S3																	2020		
EP8000 D / S1																	1900		
EP8000 D / S2	1650	724	254	510	485	301	160	600	23	202	100	120	690	220	520	86	2000		
EP8000 D / S3																	2140		
EP10000 D / S1																	1900		
EP10000 D / S2	1650	724	279	550	485	301	160	600	23	202	100	120	690	220	520	86	2000		
EP10000 D / S3																	2190		
EP12500 D / S1																	2040		
EP12500 D / S2	1650	724	318	610	485	301	160	600	23	202	100	120	690	220	520	86	2130		
EP12500 D / S3																	2320		
EP16000 D / S1																	2140		
EP16000 D / S2	1850	1000	356	685	595	378	220	600	25	280	150	200	700	200	600	120	2240		
EP16000 D / S3																	2430		
EP20000 D / S1																	2310		
EP20000 D / S2	1850	1000	394	760	595	378	220	600	25	280	150	200	700	200	600	120	2500		



**serial model:**

- precision drive by planetary gear
- large wirerope storage capacities
- rigid welded construction
- planetary gear built-on to facilitate maintenance

**as option:**


- grooved drum
- separating partition
- second brake as safety brake
- pressure roller
- rope spooling guide
- slack-rope monitoring
- separating partition and/or  
2nd wirerope fastening on the drum
- bevel gear
- manual drive device
- counter for operation hours
- wirerope limit
- other speeds, capacities and frequencies
- radio control
- low voltage control
- continuous wirerope speed
- enclosure IP 66
- pneumatic drive
- hydraulic drive
- drum protection cover
- disengaging clutch
- ATEX-version

TL150 ..



## Spur gear winch

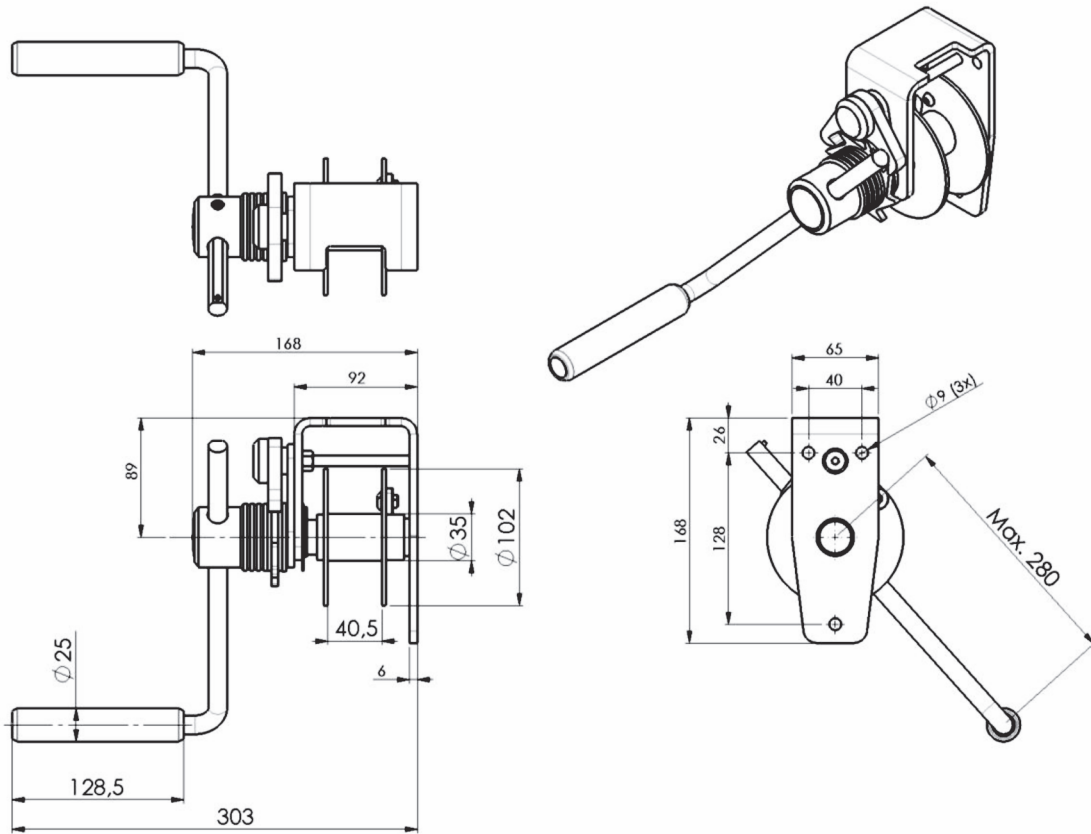
### Hand driven spur gear winch:

- robust and safe hoisting winch
- static safety factor of 4
- load pressure brake with double ratchet system
- maintenance-free bearing
- adjustable crank from 250 to 280 mm, ergonomic plastic grip
- cable outlet upwards, downwards or at rear
- paint thickness is 60 - 80 Micron in 1 layer (in compliance with DIN/ISO 12944, C1M)
- optional ATEX certified  II 3 GD T3, suitable for zone 2 and 22
- in compliance with EN 13157 and DIN 15020 and EX types ATEX 114 (94/9/EG)

**GEBUWIN**  
metal products



## Technical specifications TL150 ..



Type	Mounting	Material	Remarks
TL150 GR	Wall, 3x M8 class 8.8	Painted finish	RAL 7035 (grey)
TL150 EV	Wall, 3x M8 class 8.8	Zinc-plated finish	

Technical specifications	TL150
Capacity:	
1 <sup>st</sup> cable layer	150 kg
Last cable layer	68 kg
Crankforce 1 <sup>st</sup> cable layer	11 daN
Hoisting length by one rotation of the crank, 1 <sup>st</sup> layer	122 mm
Cable capacity	13 m
Diameter cable	4 mm
Min. breaking load cable (EN 12383-4)	9 kN
Own weight	4 kg

HW200-800 ..../..

## Spur gear winch



Hand driven spur gear winch:

- safe hoisting winch
- load pressure brake with ratchet system
- maintenance-free bearing
- ergonomic grip
- painted or stainless steel version
- in compliance with DIN 15020



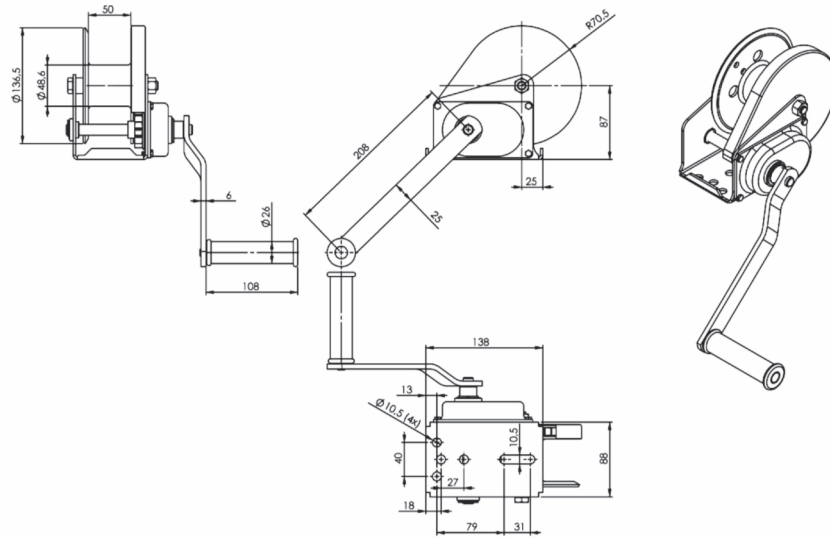
**GEBUWIN**  
metal products

Industrieweg 6 7102 DZ Winterswijk The Netherlands  
T +31 (0)543 532600 F +31 (0)543 532601  
info@gebuwin.com www.gebuwin.com

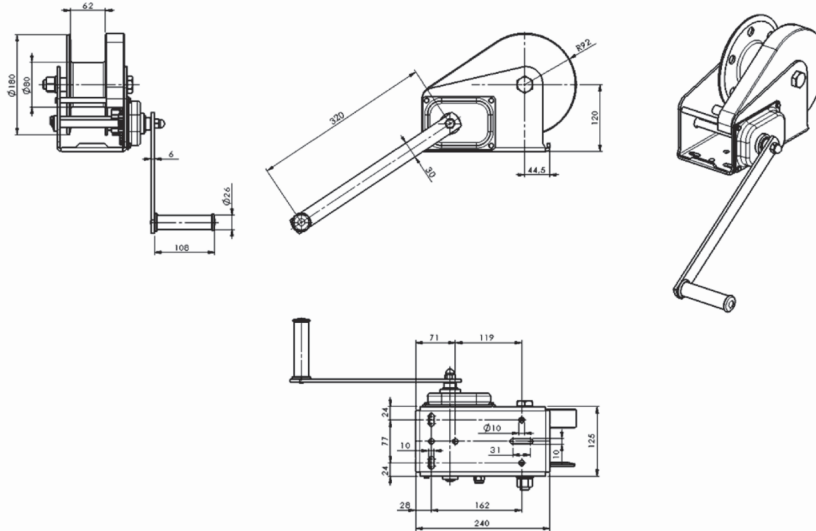


# Technical specifications HW200-800 ../..

HW200



HW800



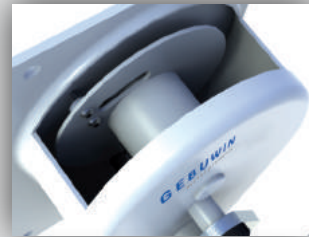
Type	Mounting	Material	Remarks
HW200 GR	Ground, 3x M8 class 8.8	Painted finish	RAL 7038 (dark grey)
HW200 SS	Ground, 3x M8 class 8.8	Stainless steel	
HW800 SS	Ground, 4x M8 class 8.8	Stainless steel	

Technical specifications	HW200	HW800
Capacity:		
1 <sup>st</sup> cable layer	200 kg	800 kg
Last cable layer	86 kg	491 kg
Crankforce 1 <sup>st</sup> cable position	8 daN	13 daN
Hoisting length by one rotation of the crank, 1 <sup>st</sup> layer	40 mm	26 mm
Cable capacity	31 m	15 m
Diameter cable (EN 12383-4)	4 mm	8 mm
Min. breaking load cable	9 kN	34 kN
Own weight	4 kg	10 kg

subject to changes


www.gebuwin.com

TL300-600 ../..



## Spur gear winch

### Hand driven spur gear winch:

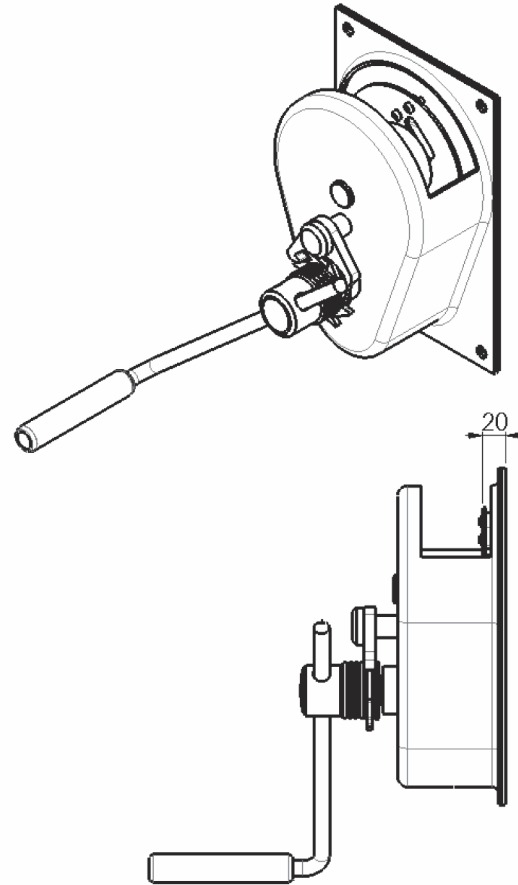
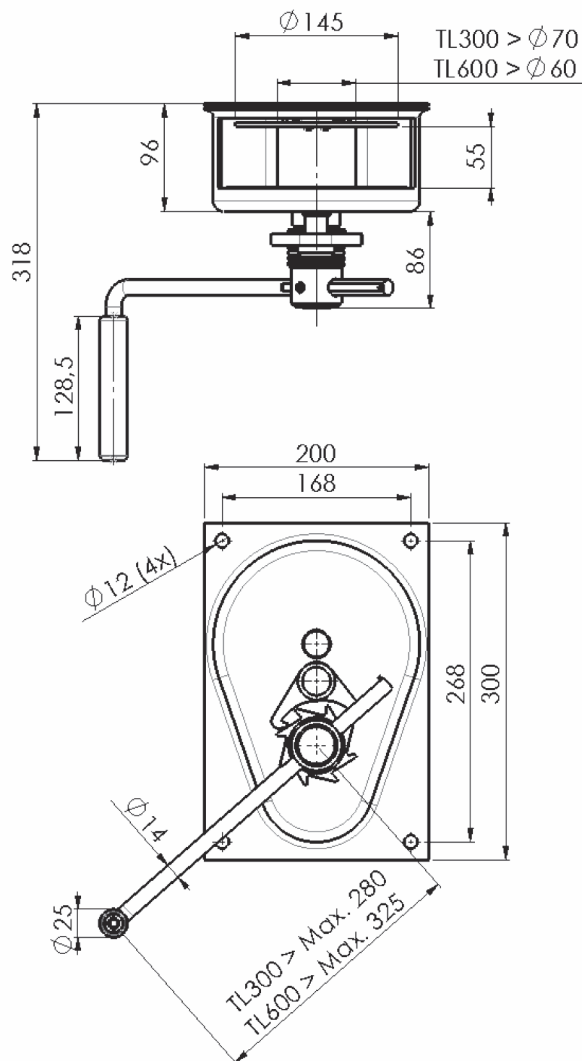
- robust and safe hoisting winch
- static safety factor of 4
- load pressure brake with double ratchet system
- maintenance-free bearing
- adjustable crank from 250 to 325 mm, ergonomic grip
- cable outlet upwards, downwards or at rear
- paint thickness is 60 - 80 Micron in 1 layer (in compliance with DIN/ISO 12944, C1M)
- optional ATEX certified  II 3 GD T3, suitable for zone 2 and 22
- closed gearbox
- in compliance with EN 13157 and DIN 15020 and EX types ATEX 114 (94/9/EG)

**GEBUWIN**  
metal products

Industrieweg 6 7102 DZ Winterswijk The Netherlands  
T +31 (0)543 532600 F +31 (0)543 532601  
info@gebuwin.com www.gebuwin.com



## Technical specifications TL300-600 ../..



Type	Mounting	Material	Remarks
TL300 GR	Wall, 4x M8 class 8.8	Painted finish	RAL 7035 (grey)
TL300 EV	Wall, 4x M8 class 8.8	Zinc-plated finish	
TL600 GR	Wall, 4x M8 class 8.8	Painted finish	RAL 7035 (grey)
TL600 EV	Wall, 4x M8 class 8.8	Zinc-plated finish	


Technical specifications	TL300	TL600
Capacity:		
1 <sup>st</sup> cable layer	300 kg	600 kg
Last cable layer	172 kg	336 kg
Crankforce 1 <sup>st</sup> cable layer	6 daN	10 daN
Hoisting length by one rotation of the crank, 1 <sup>st</sup> layer	32 mm	28 mm
Cable capacity	35 m	12 m
Diameter cable (EN 12383-4)	4 mm	6 mm
Min. breaking load cable	9 kN	17 kN
Own weight	10 kg	11 kg

TL1000-1500 ..



## Spur gear winch

### Hand driven spur gear winch:

- robust and safe hoisting winch
- static safety factor of 4
- load pressure brake with double ratchet system
- maintenance-free bearing
- adjustable crank from 250 to 325 mm, ergonomic grip
- cable outlet to left, right, and top side
- paint thickness is 60 - 80 Micron in 1 layer (in compliance with DIN/ISO 12944, C1M)
- closed gearbox
- in compliance with EN 13157 and DIN 15020 and EX types ATEX 114 (94/9/EG)
- as option:
  - ATEX certified  II 3 GD T3, suitable for zone 2 and 22
  - multiple compartment cable drum



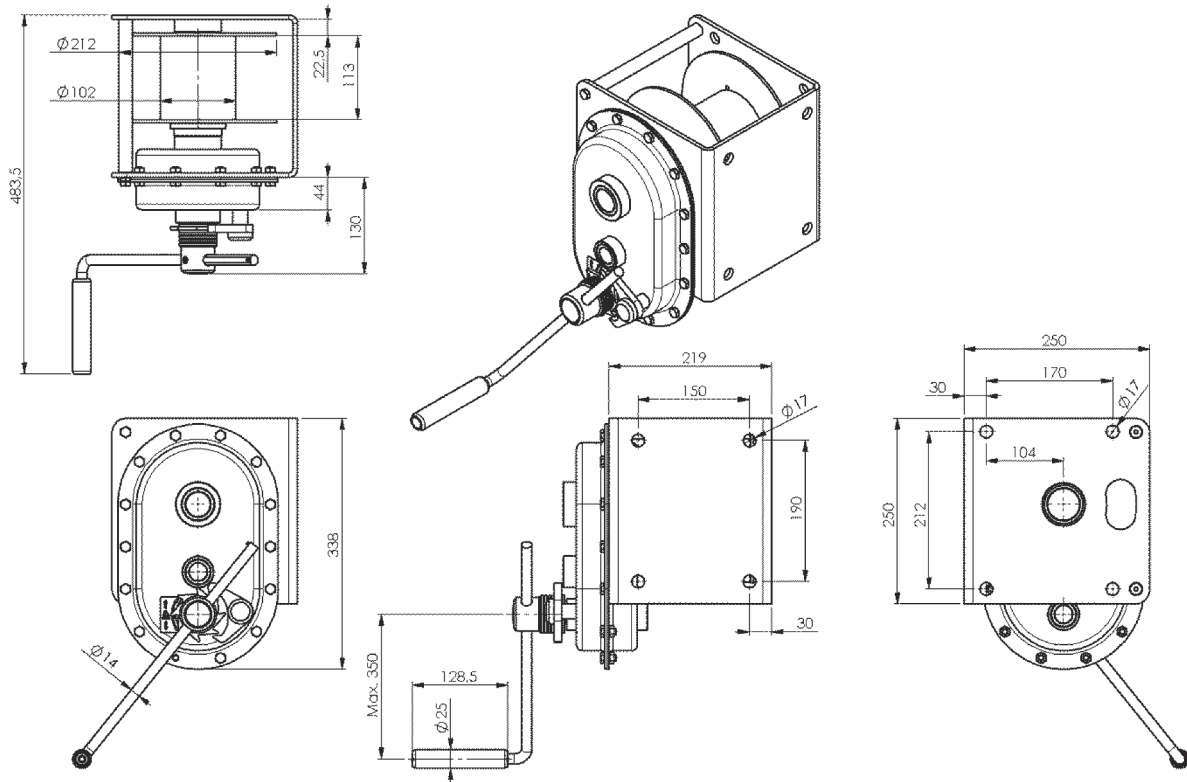
**GEBUWIN**  
metal products

Industrieweg 6 7102 DZ Winterswijk The Netherlands  
T +31 (0)543 532600 F +31 (0)543 532601  
info@gebuwin.com www.gebuwin.com





## Technical specifications TL1000-1500 ..



Type	Mounting	Material	Remarks
TL1000 GR	Wall, 4x M12 class 8.8	Painted finish	RAL 7035 (grey)
TL1000 SS	Wall, 4x M12 class 8.8	Stainless steel	
TL1500 GR	Wall, 4x M12 class 8.8	Painted finish	RAL 7035 (grey)
TL1500 SS	Wall, 4x M12 class 8.8	Stainless steel	


Technical specifications	TL1000	TL1500
Capacity:		
1 <sup>st</sup> cable layer	1000 kg	1500 kg
Last cable layer	614 kg	927 kg
Crankforce 1 <sup>st</sup> cable layer	11 daN	12 daN
Hoisting length by one rotation of the crank, 1 <sup>st</sup> layer	20 mm	14 mm
Cable capacity	33 m	21 m
Diameter cable (EN 12383-4)	8 mm	10 mm
Min. breaking load cable	34 kN	51 kN
Own weight	27 kg	27,5 kg

TC1000-1500 .. /FS



## Spur gear winch

### Hand driven spur gear winch:

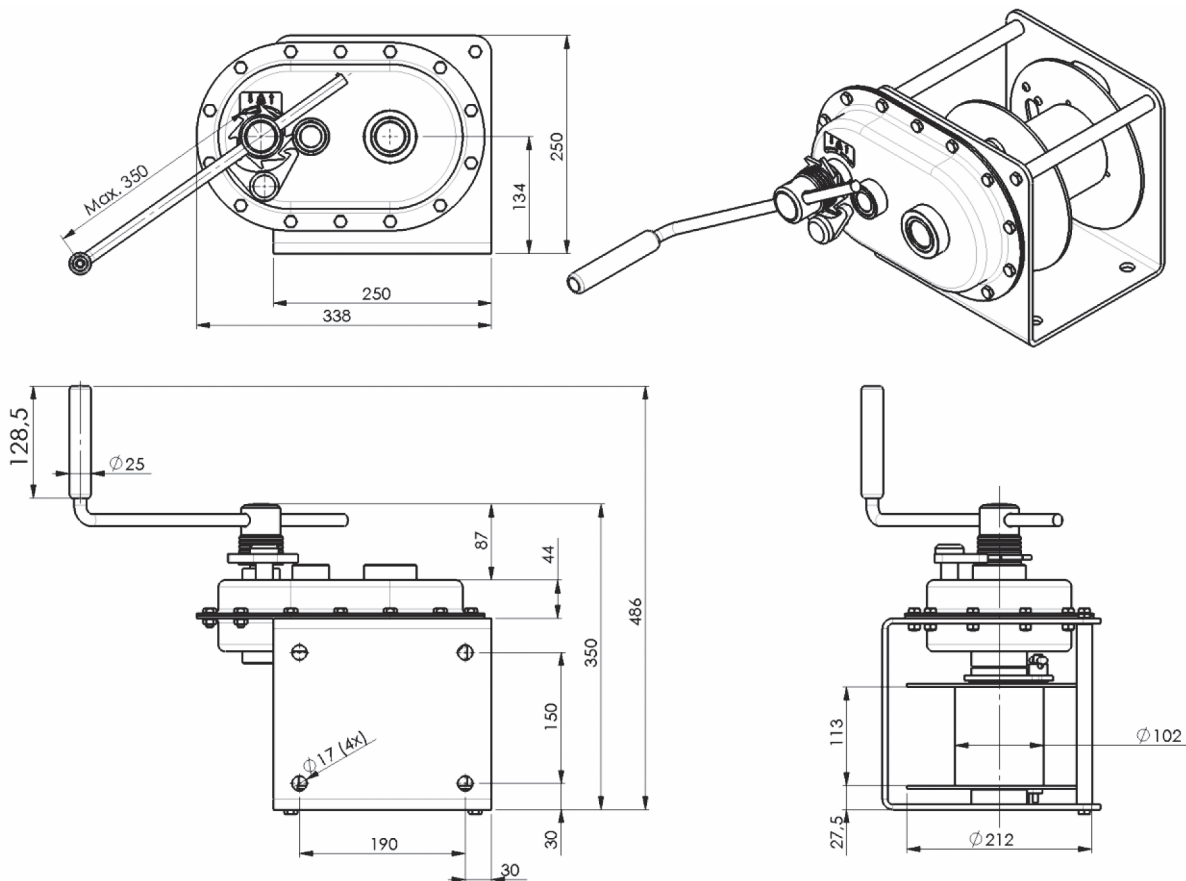
- robust and safe hoisting or pulling winch
- pulling capacity is approx. 2.5x hoisting capacity
- static safety factor of 4
- load pressure brake with double ratchet system
- maintenance-free bearing
- adjustable crank from 250 to 350 mm, ergonomic grip
- cable outlet to left, right, and top side
- paint thickness is 60 - 80 Micron in 1 layer (in compliance with DIN/ISO 12944, C1M)
- with free spool FS
- closed gearbox
- in compliance with EN 13157 and DIN 15020 and EX types ATEX 114 (94/9/EG)
- as option:
  - ATEX certified  II 3 GD T3, suitable for zone 2 and 22
  - multiple compartment cable drum



**GEBUWIN**  
metal products



## Technical specifications TC1000-1500 ../FS



Type	Mounting	Material	Remarks
TC1000 GR / FS	Console, 4x M12 class 8.8	Painted finish	RAL 7035 (grey)
TC1000 SS / FS	Console, 4x M12 class 8.8	Stainless steel	
TC1500 GR / FS	Console, 4x M12 class 8.8	Painted finish	RAL 7035 (grey)
TC1500 SS / FS	Console, 4x M12 class 8.8	Stainless steel	

Technical specifications	TC1000	TC1500
Capacity:		
1 <sup>st</sup> cable layer	1000 kg	1500 kg
Last cable layer	614 kg	927 kg
Crankforce 1 <sup>st</sup> cable layer	11 daN	12 daN
Hoisting length by one rotation of the crank, 1 <sup>st</sup> layer	20 mm	14 mm
Cable capacity	33 m	21 m
Diameter cable (EN 12383-4)	8 mm	10 mm
Min. breaking load cable	34 kN	51 kN
Own weight	27 kg	27,5 kg

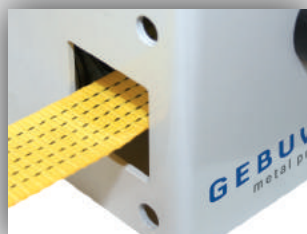
WB750 GR



## Worm gear winch

Hand operated worm gear winch:

- robust and safe hoisting or pulling winch
- pulling capacity is approx. 2.5x hoisting capacity
- static safety factor of 4
- thin webbing belt instead of cable makes the winch very compact
- winch is enclosed belt
- belt exit upwards, downwards or at rear
- square worm-wormwheel transmission and maintenance free bearing
- adjustable crank, with ergonomic grip
- easy to grease worm-wormwheel transmission
- load pressure brake with quiet double ratchet system
- paint thickness is 60 - 80 Micron in 1 layer (in compliance with DIN/ISO 12944, C1M)
- in compliance with EN 13157 and DIN15020

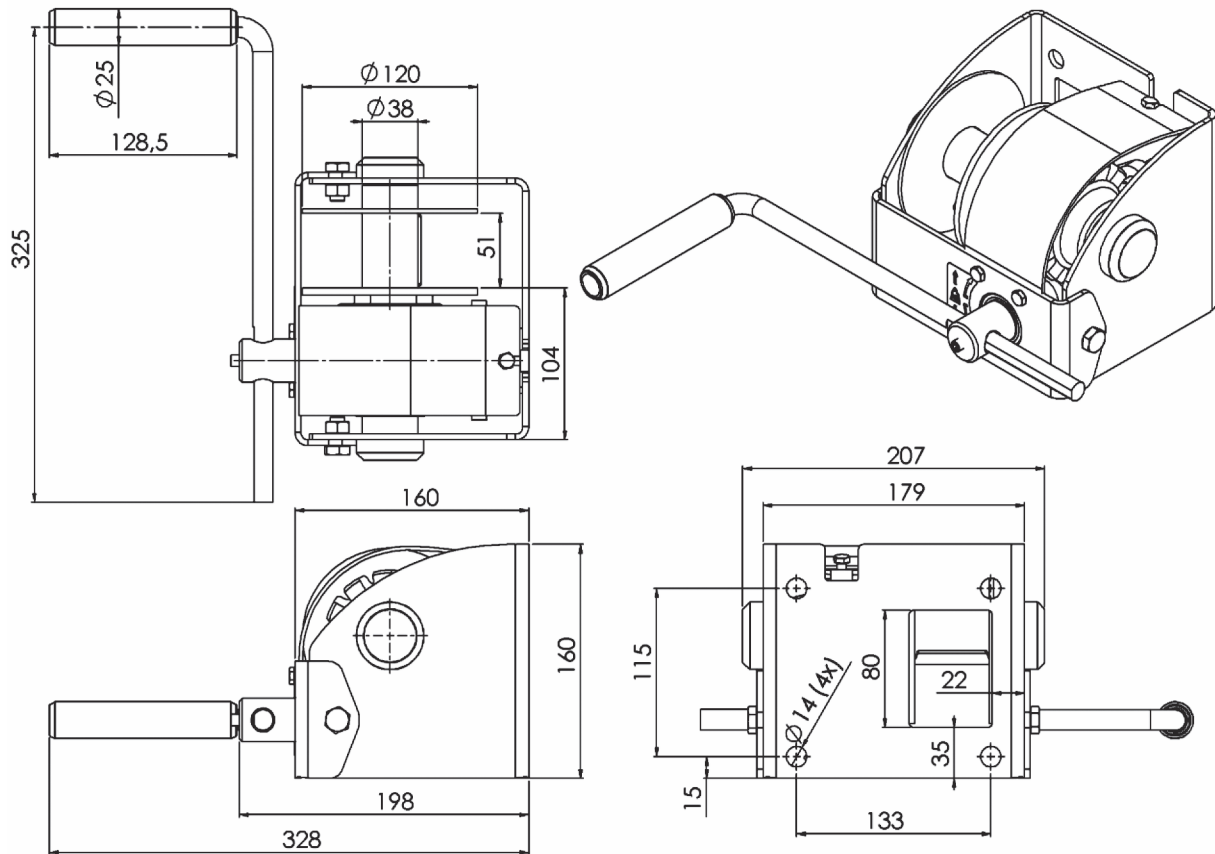


**GEBUWIN**  
metal products

Industrieweg 6 7102 DZ Winterswijk The Netherlands  
T +31 (0)543 532600 F +31 (0)543 532601  
info@gebuwin.com www.gebuwin.com



## Technical specifications WB750 GR



Type	Mounting	Material	Remarks
WB750 GR	Wall, 4x M12 class 8.8	Painted finish	RAL 7035 (grey)
WB750 EV	Wall, 4x M12 class 8.8	Zinc-plated finish	

Technical specifications	WW750
Capacity:	
1 <sup>st</sup> belt layer	750 kg
Last belt layer	350 kg
Crankforce 1 <sup>st</sup> belt layer position	11 daN
Hoisting length by one rotation of the crank, 1 <sup>st</sup> layer	12 mm
Max. belt storage	5 m
Width belt	Max. 50 mm
Min. breaking load belt	37,5 kN
Own weight	9 kg

## TL150 ZW (basket winch)



## Spur gear winch

### Hand driven basketball winch:

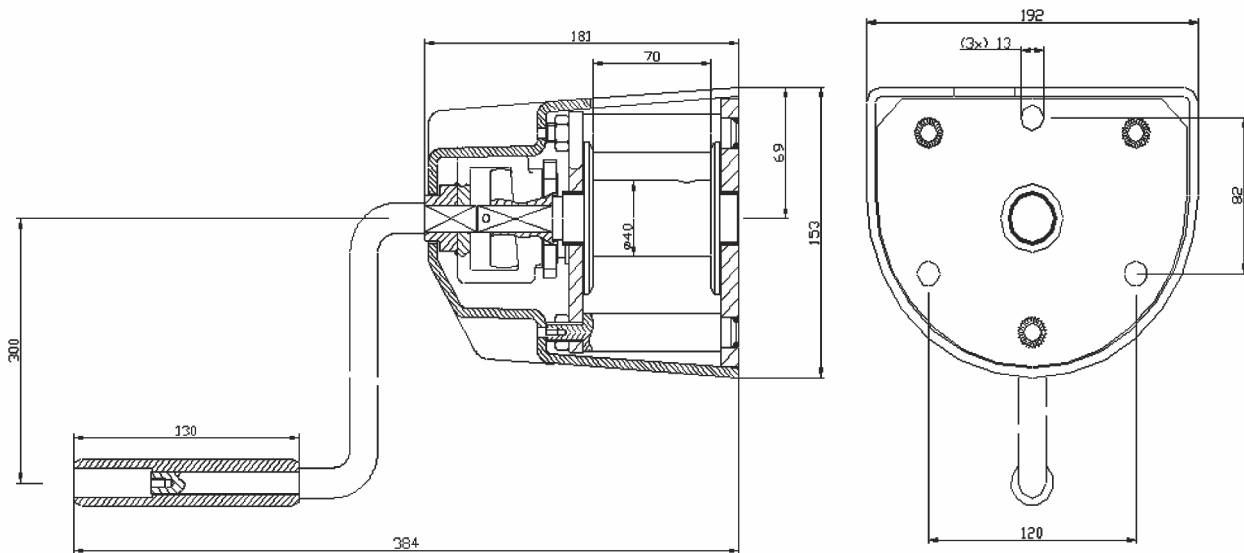
- robust and safe hoisting winch
- developed to handle basketball back boards
- for indoor use only
- load pressure brake with double ratchet system
- safety crank, no blow-back
- detachable crank, no tools needed
- no protruding parts
- casing is made of blow resistant ABS
- painted inner works
- complies to European CE regulations

**G E B U W I N**  
metal products

Industrieweg 6 7102 DZ Winterswijk The Netherlands  
T +31 (0)543 532600 F +31 (0)543 532601  
info@gebuwin.com www.gebuwin.com



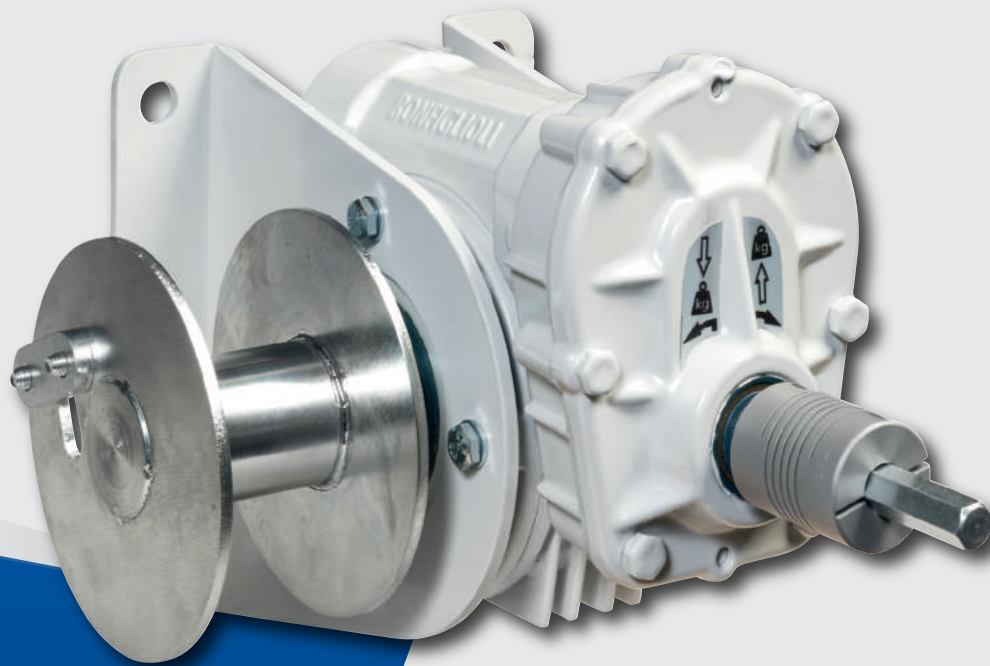
## Technical specifications TL150 ZW basketball winch



Type	Mounting	Material	Remarks
TL150 ZW basketball winch	Wall (3 mounting holes)	Casing is made of blow resistant ABS (black)	Indoor use only

Technical specifications	TL150
Capacity:	
1 <sup>st</sup> cable layer	150 kg
Crankforce 1 <sup>st</sup> cable position	ca. 8 daN
Hoisting length by one rotation of the crank, 1 <sup>st</sup> layer	125 mm
Cable capacity	Ca. 10 m (5 layers)
Diameter cable (EN 12383-4)	4 mm
Min. breaking load cable	9 kN
Own weight (including crank)	6 kg

WA200 GR/D



# Battery driven worm gear winch

## Battery driven worm gear winch:

- robust and safe hoisting winch, for use in combination with a cordless drill
- static safety factor of 4
- flexible coupling attachment for cordless drill
- self braking worm gear system
- suitable for wall or floor (console) fixation
- suitable for short hoisting lengths
- maintenance free aluminum closed gear box
- painted frame, 1 layer (60 - 80 Micron) and zinc-plated finished cable drum
- in compliance with DIN 15020 and the EN13157



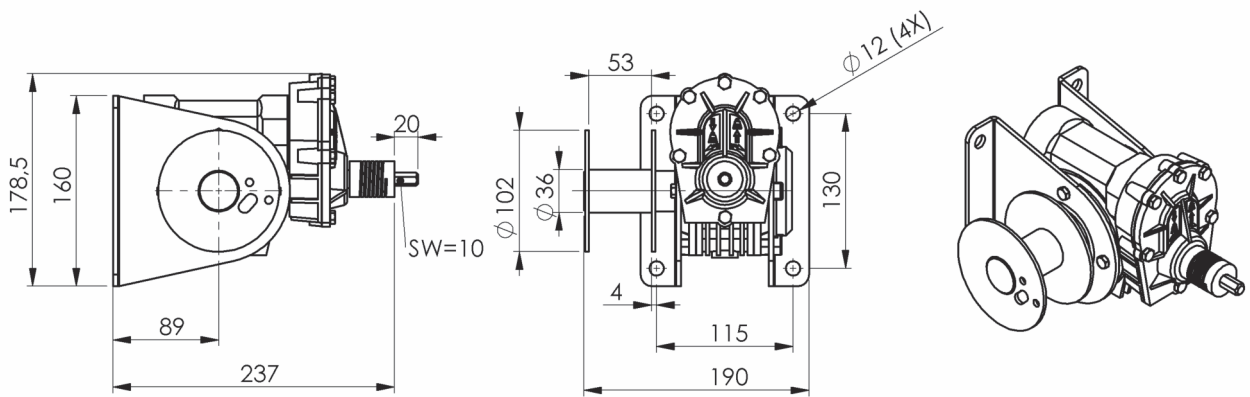
**GEBUWIN**  
metal products

Industrieweg 6 7102 DZ Winterswijk The Netherlands  
T +31 (0)543 532600 F +31 (0)543 532601  
info@gebuwin.com www.gebuwin.com

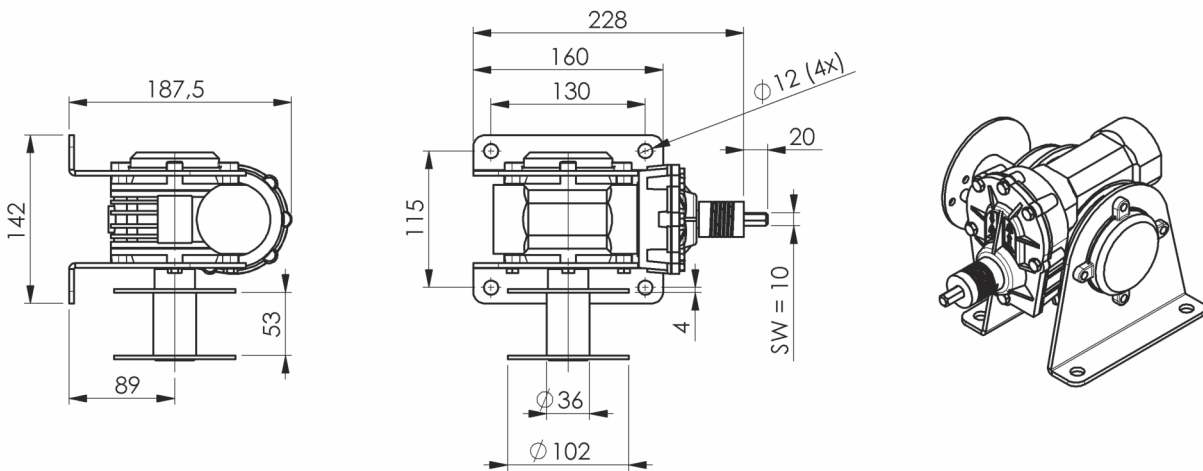




# Technical specifications WA200 GR/D



Wall version



Floor version

Type	Mounting	Material	Remarks
WA200 GR / D	Floor or Wall 4x M10 class 8.8	Painted finish	RAL 7035 (grey)

Technical specifications	WA200
Capacity:	
1 <sup>st</sup> cable layer	200 kg
Last cable layer (7 <sup>th</sup> )	90 kg
Max. speed drill / driver	1400 rpm
Six-angled adapter	10 mm
Max. hoisting speed	800 mm/ min
Hoist length with 200 kg and cordless drill 14,4V - 3Ah	8 m
Cable capacity	18 m
Diameter cable	4 mm
Min. breaking load cable	9 kN
Own weight	6 kg

SD125-250-500..



# Swivel Davit



#### Foldable Swivel Davit:

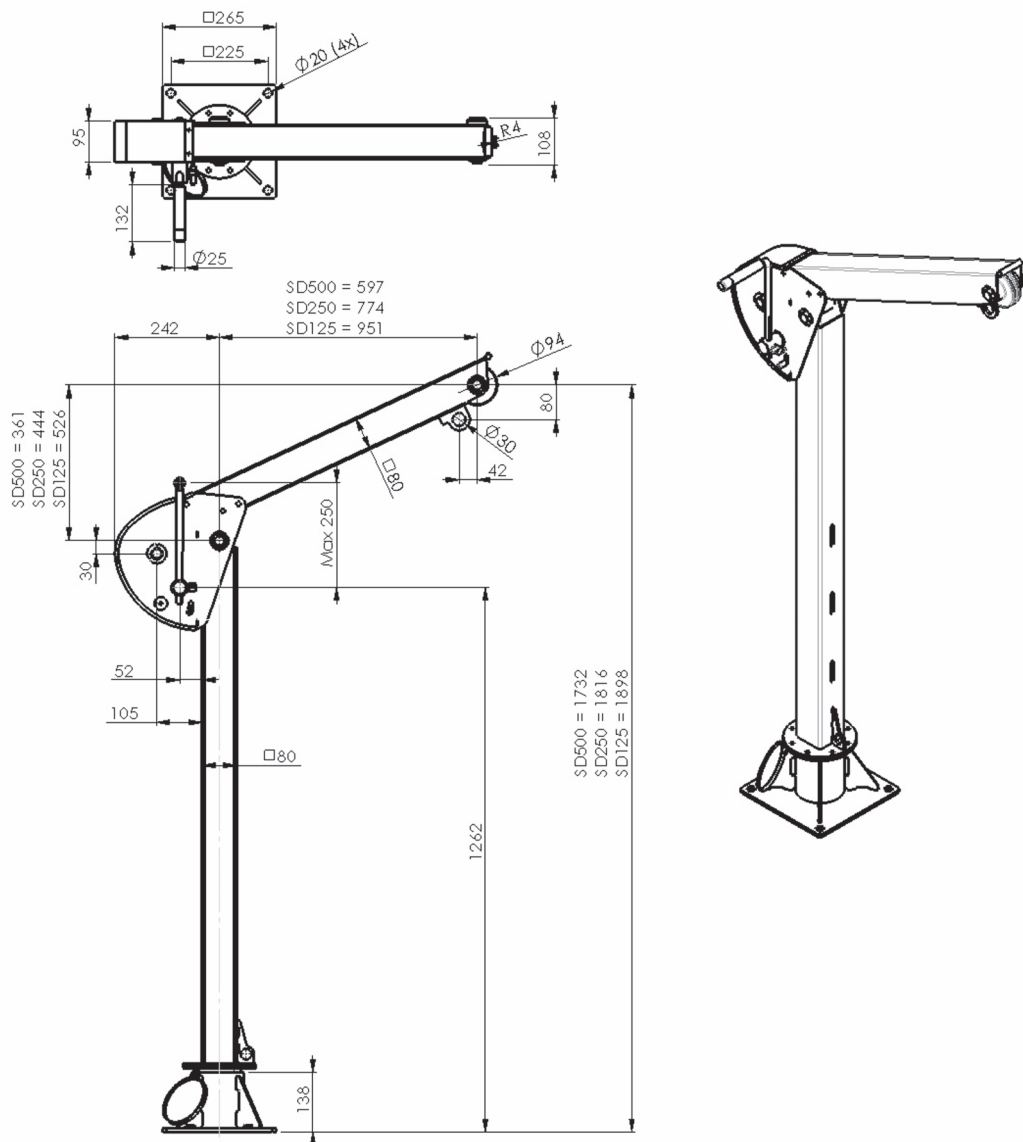
- robust and safe hoisting Davit
- ready to hoist in only 5 seconds
- covered winch and cable in an ergonomic modern design
- easy to transport, only 25 kg
- 360 degrees rotation over a built in pivot bearing
- maintenance free
- including cable (8m)
- adjustable crank
- paint application in compliance with DIN/ISO 12944, C1M
- integrated winch in compliance with EN 13157, DIN 15020 and EX types ATEX 114 (94/9/EG)
- as option:
  - zinc-plated finish (6-8 Micron)
  - other dimensions on request
  - ATEX certified  II 3 GD T3, suitable for zone 2 and 22

**GEBUWIN**  
metal products

Industrieweg 6 7102 DZ Winterswijk The Netherlands  
T +31 (0)543 532600 F +31 (0)543 532601  
info@gebuwin.com www.gebuwin.com



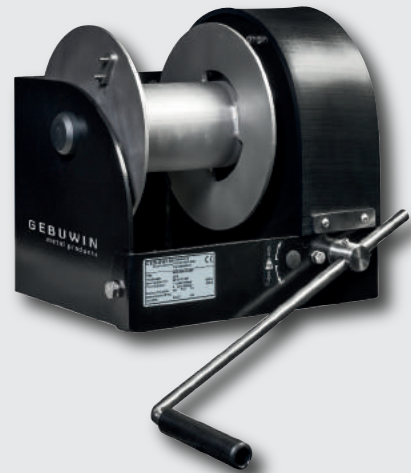
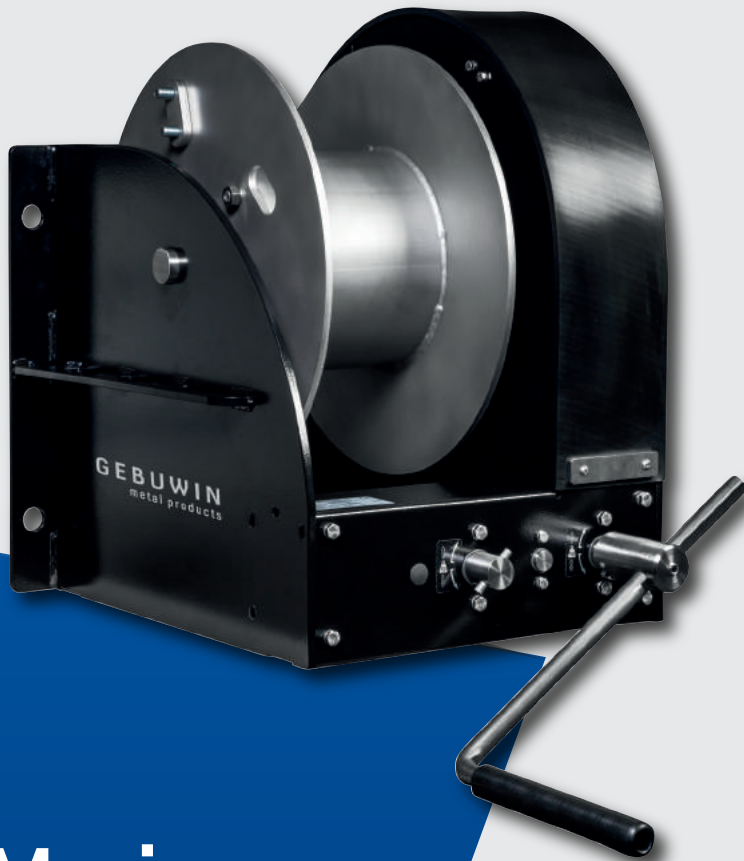
## Technical specifications SD125-250-500..



Type	Mounting	Material	Remarks
Swivel Davit SD125, 250, 500 GR	Floor, 4x M18 class 8.8	Painted finish	RAL 7035 (grey)
Swivel Davit SD125, 250, 500 EV	Floor, 4x M18 class 8.8	Zinc-plated finish	
Box Column SD500 EV/ON	On floor	Zinc-plated finish	Including cover

Technical specifications	SD125	SD250	SD500
Capacity:			
1 <sup>st</sup> cable layer	125 kg	250 kg	500 kg
Last cable layer (7)	125 kg	250 kg	268 kg
Crankforce 1 <sup>st</sup> cable position	10 daN	10 daN	10 daN
Hoisting length by one rotation of the crank, 1 <sup>st</sup> layer	20 mm	20 mm	20 mm
Cable capacity	24 m	24 m	13 m
Diameter cable (EN 12383-4)	4 mm	4 mm	5 mm
Min. breaking load cable	9 kN	9 kN	15 kN
Own weight Swifel Davit (cable included)	25 kg	25 kg	25 kg
Own weight box column	7 kg	7 kg	7 kg

WW1500-3000-5000 D/MR



## Marine worm gear winch



### Hand operated worm gear winch:

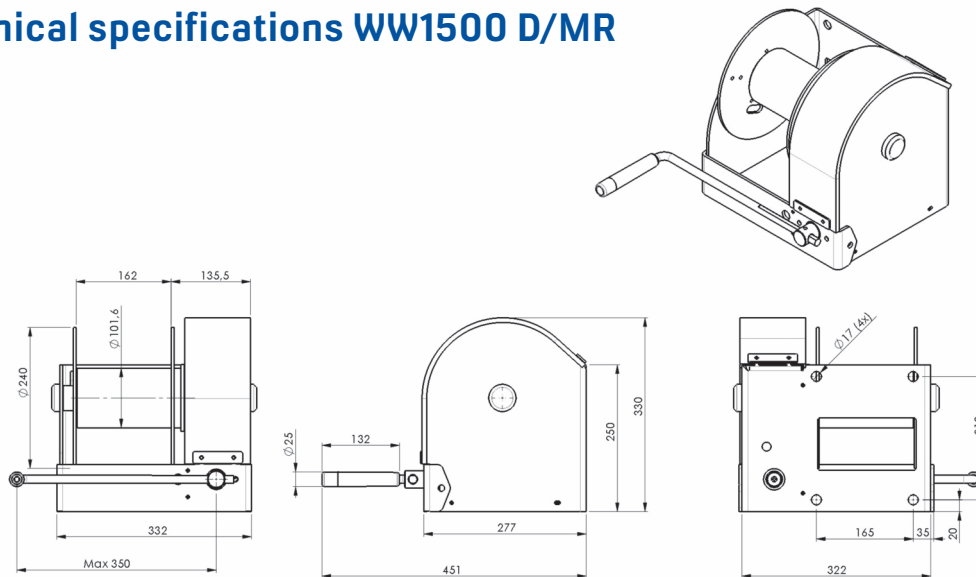
- robust and safe hoisting winch with two speeds for WW3000-5000
- in compliance with EN13157, DIN 15020 and EX types ATEX 114 (94/9/EG)
- static safety factor 4
- square worm-wormwheel transmission and maintenance free bearings
- cable outlet upwards, downwards or at rear
- adjustable crank, with ergonomic grip
- easy to grease worm-wormwheel transmission
- load pressure brake with silent double ratchet system
- transmission is entirely enclosed and protected against environmental influence with protection classification IP54
- cable drum, crank and all extruding shafts are made of Stainless Steel SAE grade 316
- all fasteners are made of Stainless Steel A4
- winch frame is made of steel, surfaces are brushed and edges are rounded
- paint thickness is 240 Micron in 3 layers (in compliance with DIN/ISO 12944, C5M)
- as option:
  - grooved drum
  - multiple compartment cable drum
  - suitable for winch power tool AM5000
  - ATEX certified  $\text{Ex}$  II 3 GD T4, suitable for zone 2 and 22

**GEBUWIN**  
metal products

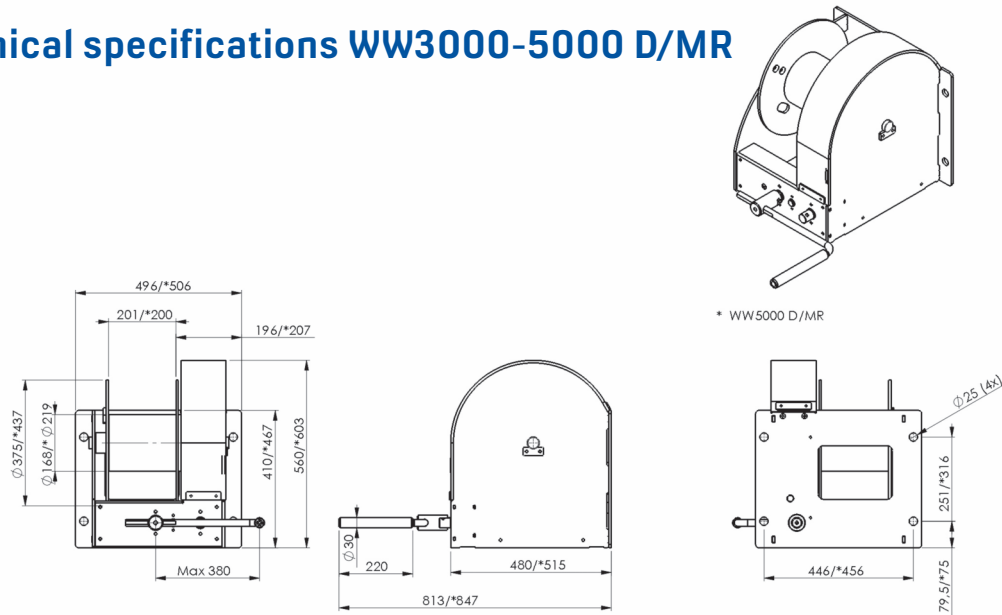
Industrieweg 6 7102 DZ Winterswijk The Netherlands  
T +31 (0)543 532600 F +31 (0)543 532601  
info@gebuwin.com www.gebuwin.com



## Technical specifications WW1500 D/MR



## Technical specifications WW3000-5000 D/MR



Type	Mounting	Material	Remarks
WW1500 D/MR	Wall, 4x M16 class 8.8	Painted/ stainless steel	RAL 9005 (black)
WW3000 D/MR	Wall, 4x M20 class 8.8	Painted/ stainless steel	RAL 9005 (black)
WW5000 D/MR	Wall, 4x M20 class 8.8	Painted/ stainless steel	RAL 9005 (black)

Technical specifications	WW1500	WW3000	WW5000
Capacity:			
1 <sup>st</sup> cable layer	1500 kg	3000 kg	5000 kg
Last cable layer	846 kg	1667 kg	3276 kg
Crankforce 1 <sup>st</sup> cable layer	14 daN	31 (14) daN	73 (14) daN
Hoisting length by one rotation of the crank, 1 <sup>st</sup> layer	9 mm	11 (5) mm	13 (3) mm
Max. cable storage per compartment	41 m	68 m	43 m
Diameter cable (EN 12384-4)	10 mm	14 mm	18 mm
Min. breaking force of cable	51 kN	102 kN	168 kN
Own weight	30 kg	104 kg	135 kg

TK1000-1500-1001-1501



## Spur gear box

### Hand driven spur gearing:

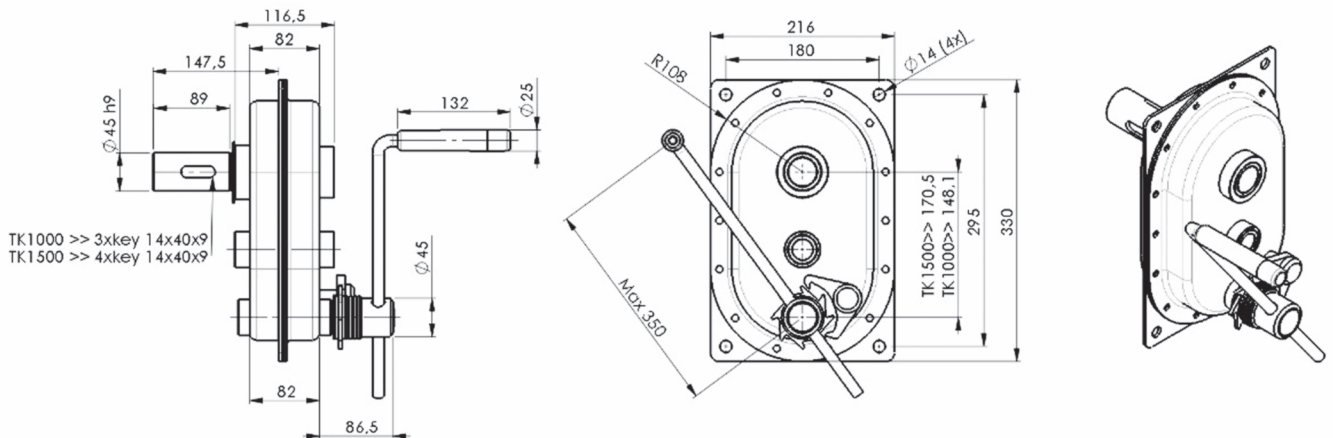
- robust spur gear
- closed gearbox IP54
- maintenance-free plain bearings
- static safety factor of 4
- TK1000-1500 with crank and load pressure brake
- TK1001-1501 with input and output shaft  
- as option stainless steel (14301) gearbox



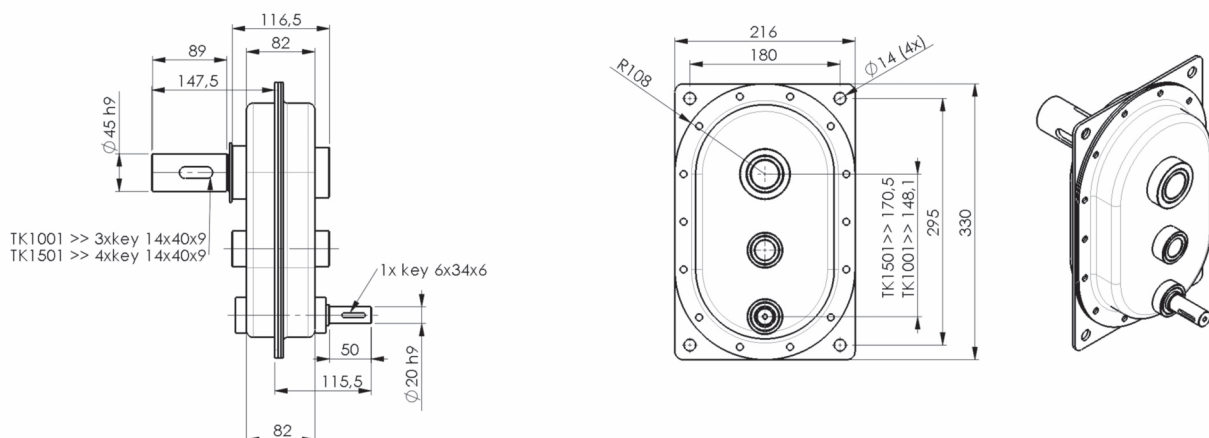
**GEBUWIN**  
metal products



## Technical specifications TK100-1500



## Technical specifications TK1001-1501



Type	Mounting	Material	Remarks
TK1000 EV	Wall, 4x M12 class 8.8	Zinc plated finish	
TK1500 EV	Wall, 4x M12 class 8.8	Zinc plated finish	
TK1001 EV	Wall, 4x M12 class 8.8	Zinc plated finish	
TK1501 EV	Wall, 4x M12 class 8.8	Zinc plated finish	

Technical specifications	TK1000	TK1500	TK1001	TK1501
Max output torque	550 Nm	840 Nm	550 Nm	840 Nm
Crankforce	11 daN	12 daN		
Max input torque			38 Nm	42 Nm
Max input speed			60 rpm	60 rpm
Transmission ratio	1:17	1:25,7	1:17	1:25,7
In- / output shaft diameter	- /45 mm	- /45 mm	20/45 mm	20/45 mm
Own weight	16,5 kg	17 kg	16 kg	16,5 kg

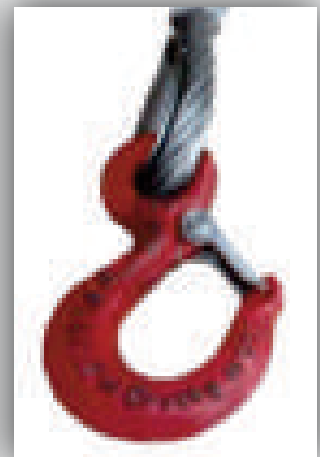
AR150-7500 .../...



## Cable set

### Standard cable sets:

- galvanized steel cable
- lay method: right crosslay
- one pointed and one thimble and talurit end
- supplied with safety sling hook with latch
- other specifications are available on demand
- in compliance with EN 12383-4 and EN 13157



**G E B U W I N**  
metal products

Industrieweg 6 7102 DZ Winterswijk The Netherlands  
T +31 (0)543 532600 F +31 (0)543 532601  
info@gebuwin.com www.gebuwin.com



## Technical specifications AR150-7500 .../...

Type	Diameter cable	Length	Min. breaking load	Pulling force	Hook grade
AR150 D4 / L15	4 (mm)	15 (m)	9 (kN)	1770 (N/mm <sup>2</sup> )	4
AR600 D6 / L12	6 (mm)	12 (m)	17 (kN)	1770 (N/mm <sup>2</sup> )	4
AR1000 D8 / L15	8 (mm)	15 (m)	34 (kN)	1770 (N/mm <sup>2</sup> )	8
AR1500 D10 / L15	10 (mm)	15 (m)	51 (kN)	1770 (N/mm <sup>2</sup> )	8
AR2000 D11 / L15	11 (mm)	15 (m)	63 (kN)	1770 (N/mm <sup>2</sup> )	8
AR3000 D14 / L15	14 (mm)	15 (m)	102 (kN)	1770 (N/mm <sup>2</sup> )	8
AR4000 D16 / L15	16 (mm)	15 (m)	133 (kN)	1770 (N/mm <sup>2</sup> )	8
AR5000 D18 / L15	18 (mm)	15 (m)	168 (kN)	1770 (N/mm <sup>2</sup> )	8
AR7500 D22 / L15	22 (mm)	15 (m)	251 (kN)	1770 (N/mm <sup>2</sup> )	8

subject to changes

[www.gebuwin.com](http://www.gebuwin.com)

AC1500-1501-5000

# Cranks



#### Standard cranks:

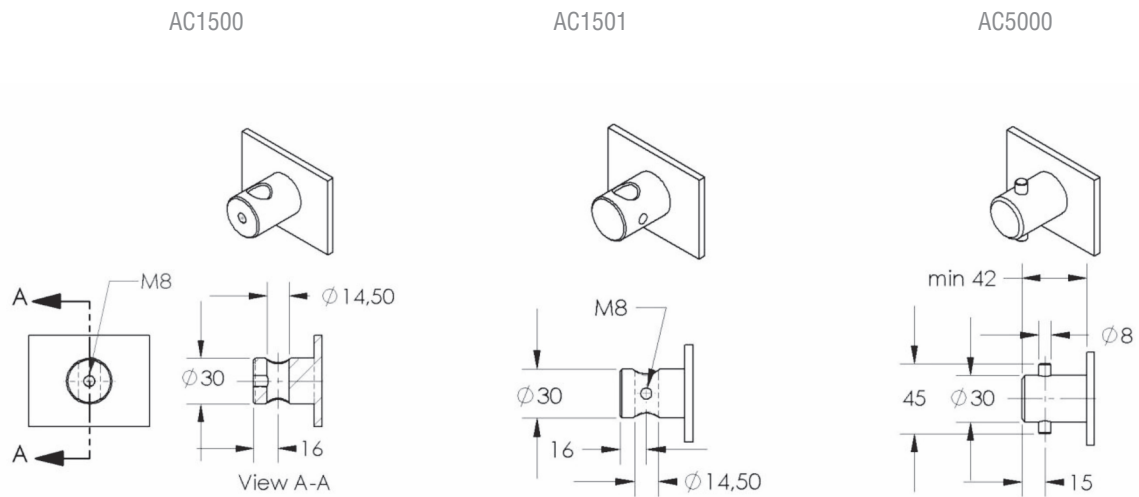
- zinc-plated crank
- plastic (POM) ergonomic grip
- 100 mm in length adjustable

**GEBUWIN**  
metal products

Industrieweg 6 7102 DZ Winterswijk The Netherlands  
T +31 (0)543 532600 F +31 (0)543 532601  
info@gebuwin.com www.gebuwin.com

# Technical specifications AC1500-1501-5000

## SHAFT END DIMENSIONS



Type	Grip material	Diameter crank	Length of crank	Diameter grip	Length of grip	Adjustable length
AC1500	POM (plastic)	14 (mm)	380 (mm)	25 (mm)	130 (mm)	100 (mm)
AC1501	POM (plastic)	14 (mm)	380 (mm)	25 (mm)	130 (mm)	100 (mm)
AC5000	POM (plastic)	18 (mm)	400 (mm)	30 (mm)	220 (mm)	100 (mm)

KB500-1000-2000-3000-5000 GR

# Pedestal



**Pedestal:**

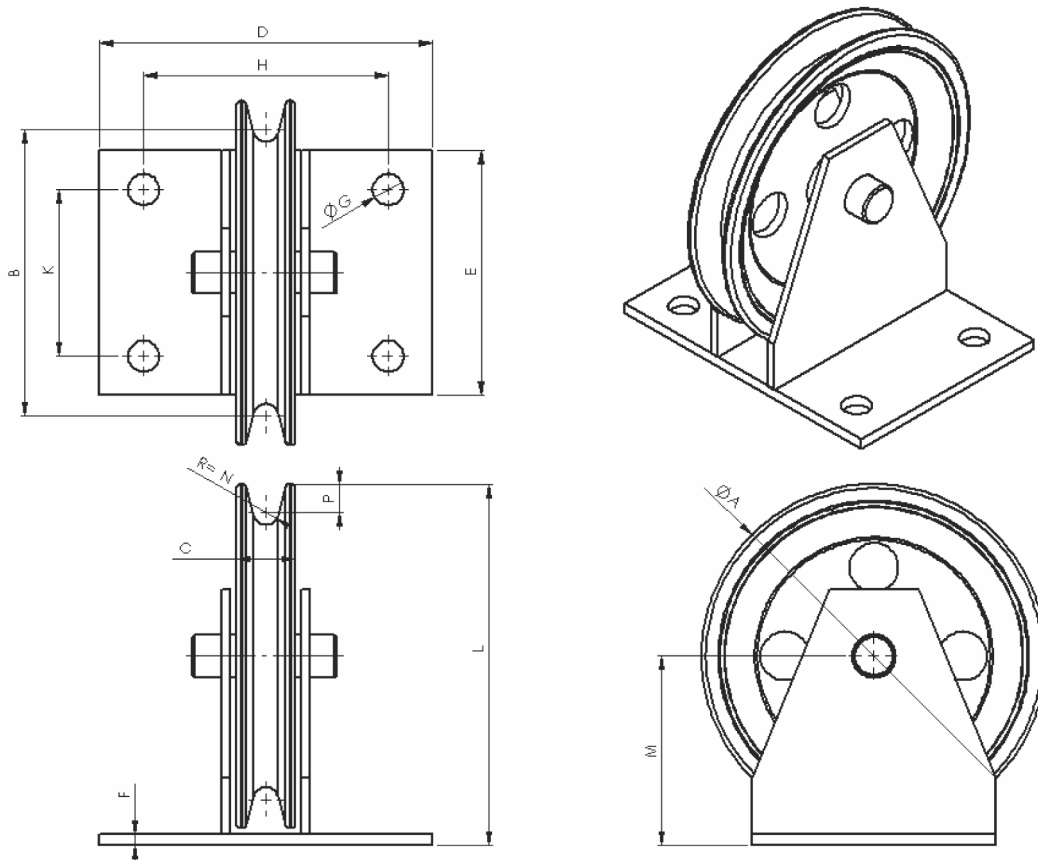
- robust
- suitable for hand-driven winches
- cable pulley made of cast iron
- plain bearing

**GEBUWIN**  
metal products

Industrieweg 6 7102 DZ Winterswijk The Netherlands  
T +31 (0)543 532600 F +31 (0)543 532601  
info@gebuwin.com www.gebuwin.com



## Technical specifications KB500-1000-2000-3000-5000 GR



Type	Mounting	Material finish	Remarks
KB500 GR	4x M10 class 8.8	Painted finish	RAL 7035 (grey)
KB1000 GR	4x M12 class 8.8	Painted finish	RAL 7035 (grey)
KB2000 GR	4x M16 class 8.8	Painted finish	RAL 7035 (grey)
KB3000 GR	4x M20 class 8.8	Painted finish	RAL 7035 (grey)
KB5000 GR	4x M20 class 8.8	Painted finish	RAL 7035 (grey)

Dimension (mm)	A	B	C	D	E	F	G	H	K	L	M	N	P
KB500 GR	115	89	24	125	65	4	12	95	35	126	69	5,5	13
KB1000 GR	155	129	27	150	110	5	14	110	75	163	85	5,5	13
KB2000 GR	220	184	32	175	165	6	17	125	115	236	126	8,5	18
KB3000 GR	260	222	40	255	200	8	21	199	144	278	148	9,5	19
KB5000 GR	310	250	52	270	240	9	21	210	180	339	184	14	30

Technical specifications	KB500	KB1000	KB2000	KB3000	KB5000
Max. capacity	500 kg	1000 kg	2000 kg	3000 kg	5000 kg
Max. diameter cable	10 mm	10 mm	16 mm	18 mm	26 mm
Own weight	1,5 kg	3 kg	6,5 kg	12 kg	23 kg

## AM5000-EM5000



# Winch power tool

This pneumatic auxiliary motor and electrical auxiliary motors are intended as an alternative to the manual drive and are only used for brief and non-frequent usage. The combination of manual winch and electrical- or pneumatic auxiliary motor is not an alternative to an electrical driven winch.

#### Winch power tool:

- robust slow speed drive units
- easy to operate
- reversible rotation
- suitable for use on the following models: WW1000, 1500, 2000, 3000, 4000, 5000 and 7500
- because of a swift and easy connection system this unit is well equipped to serve various winches in one plant

#### AM5000

- air motor
- including filter and hose fitting
- painted air motor and zinc plated adapter system

#### EM5000

- electric drill motor 230V-50Hz
- metal gear head with MT4 holder
- including zinc plated winch adapter, additional handle, drift key, suspension eyelet



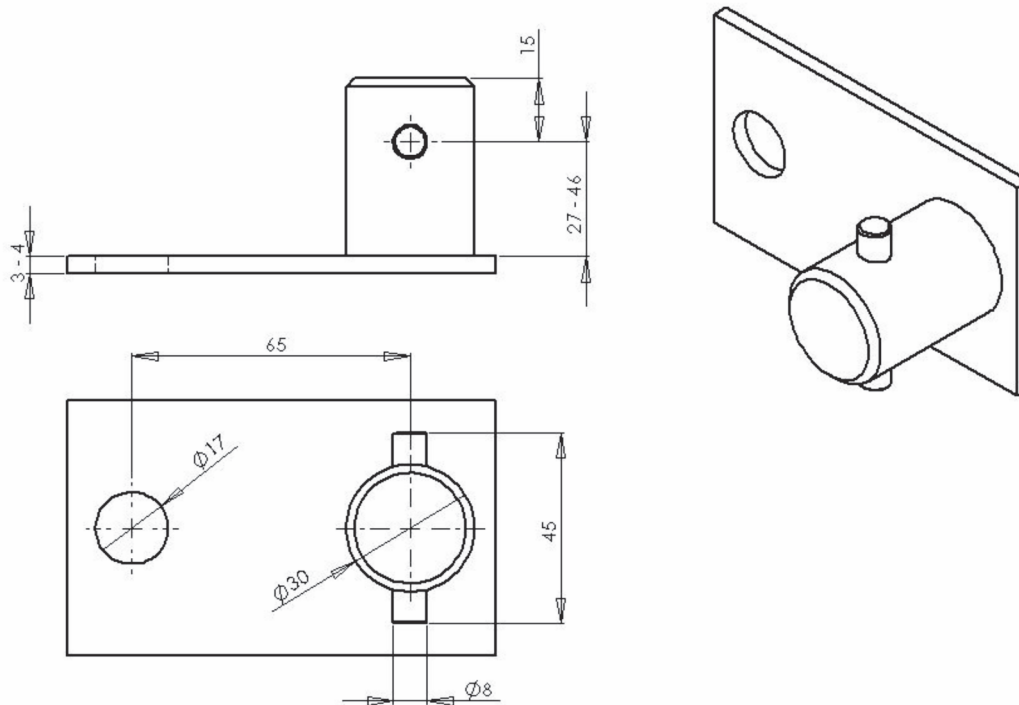
**GEBUWIN**  
metal products

Industrieweg 6 7102 DZ Winterswijk The Netherlands  
T +31 (0)543 532600 F +31 (0)543 532601  
info@gebuwin.com www.gebuwin.com



## Technical specifications AM5000-EM5000

### DIMENSION WINCH SHAFT AND HOLE



Technical specifications	AM5000	EM5000
Power	1200W	900W
Air pressure	Max. 6-8 bar	-
Voltage – frequency	-	230V-50Hz
Free speed	140 rpm	100 rpm
Speed at max. power (torque)	60 rpm (60-90 Nm)	60 rpm (50-70 Nm)
Dimension L x H x B	545x76x277 mm	510x530x150 mm
Own weight	5 kg	13 kg
Air consumption at max power	2100 l/min	-
Min. fitting/hose diameter (inside)	10,4/15 mm	-
Cable length with plug	-	2,5 m

Industrieweg 6 7102 DZ Winterswijk The Netherlands  
T +31 (0)543 532600 F +31 (0)543 532601  
info@gebuwin.com www.gebuwin.com