

GirRi Surf Project

James Fisher Offshore's equipment and personnel were key in the completion of phase two of this critical scope. JFO supplied winch packages, along with associated deckequipment and highly skilled JFO technicians, which were all essential for the installation of I-tube and umbilical.

The winch packages were split between the Girassol FPSO and on board the Reef Larissa and Happy Rover

- Girassol FPSO
- 3 x SBN30 winch packages with Zone 2 Electric HPU's
- 3 x Running line monitors
- 3 x Vertical deck sheaves

- Reef Larissa
- 1 x SBN31 winch package with safe area Diesel HPU
- 1 x Running line monitor

- Happy Rover
- 1 x BFG15 winch package with safe area Electric HPU



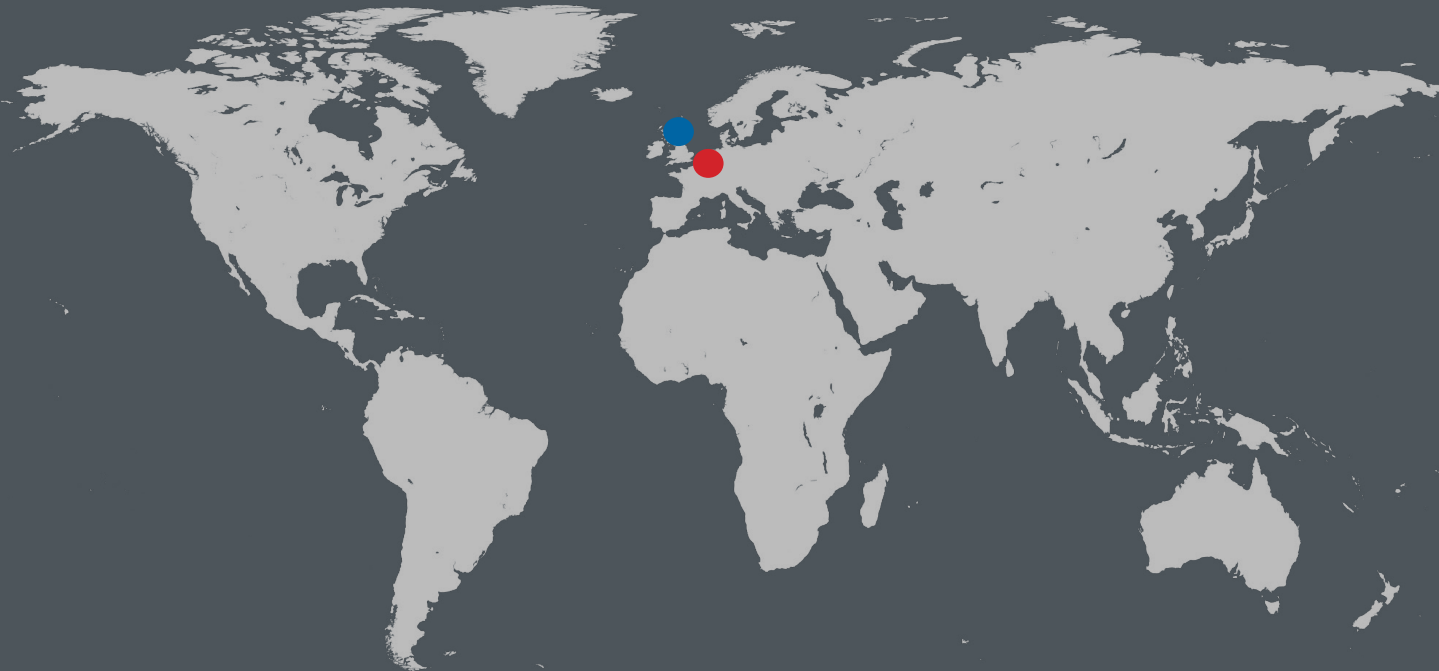
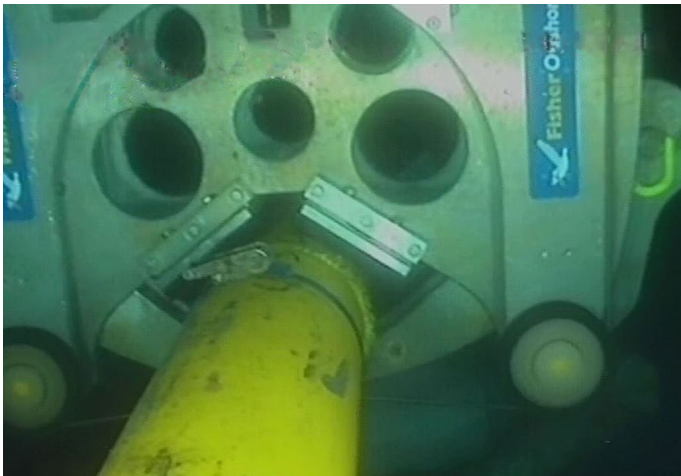
Baobab Project

James Fisher Offshore successfully completed two scopes for the removal of flexible riser sections on the Baobab field, offshore Ghana. The work performed was at a depth of 1200mtr and required a complex series of cuts to be performed on spools in piggyback - 6” coating with 2” coating to give a total diameter max. 350mm. Suitable buoyancy and framework were fabricated to control the orientation of the saw during the crucial cutting of the subsea spools.

Scope of supply

- 1 x Diamond wire saw
- 1 x Subsea basket
- 1 x Electric HPU
- 1 x ROV dirty work pack
- JFO experienced offshore technicians

JFO’s team of highly skilled offshore technicians were on hand to provide 24 hour operational cover and ensure seamless delivery on time.



James Fisher Offshore UK

North Meadows  
Oldmeldrum  
Aberdeenshire  
AB51 0GQ

Tel: +44 1651 873932  
Email: info@fisheroffshore.com

www.fisheroffshore.com

DRI France

136 Rue Jean-Baptiste Godin  
59820  
Gravelines  
France

Tel: +33 3 2863 9221  
Email: contact@dri-france.com

www.dri-france.com



James Fisher Offshore  
and  
DRI France  
  
Partnership





James Fisher Offshore

James Fisher Offshore (JFO) is a specialist offshore partner, providing equipment and expert services as a single-source supplier to support the delivery of critical subsea and topside projects globally.

Designed for demanding lifting and pulling applications, JFO's hydraulic winches are suitable for offshore and onshore operations.

JFO supplies single drum hydraulic winches, ranging from 5T to 70T with the option to provide larger 100T+ assets for hire.

JFO have an extensive equipment fleet, supported by in-house expert project and engineering teams, who provide unrivalled technical support throughout a projects lifecycle.



Suitable for a variety of onshore and offshore applications, James Fisher Offshore's foldable and knuckleboom (cherry picker/ HIAB) **cranes** are available in varying lifting capacities, typically up to 5 tonnes with a maximum outreach of 21m, for hire.



JFO offers a wide selection of subsea tooling including subsea grabs, shears, diamond wire saws and DNV-rated subsea baskets for a range of applications.

Our subsea tools are suitable for numerous underwater applications, whether remotely operated vehicle (ROV) or diver-operated

James Fisher Offshore has significant experience in supplying cutting, removal and recovery solutions, suitable for both topside and subsea projects, and is able to ensure its capabilities meet operator requirements effectively and safely.



Partnership

James Fisher Offshore (JFO) have signed an agency agreement with DRI France to work in partnership throughout Europe.

*JFO and DRI have worked together for several years now and the agency agreement was the natural next step. Collaboration has been a key strategy for JFO in recent years and we look forward to working in partnership with DRI. Both companies have similar core values and focus on exceptional customer experience. With our product portfolios aligned we can now provide our clients in France easy access to the JFO technical expertise and extensive rental fleet, backed up with the local support of the DRI team.*  
Graeme Brand, Sales Manager, JFO

*we have found working in partnership with JFO seamless in the past as their company shares the same level of integrity and attention to detail as we do at DRI. Having access to the JFO rental fleet complements our existing portfolio of products and gives our customers in France enhanced options supported on a local level by DRI.*  
Pascal Villain, Sales, DRI France



We overhaul, test and re-certify as per OEM, all models of Ingersoll Rand 150kg man riding winches. We hold all service kits/spare parts ex stock allowing us to turnaround 150kg man riders within 7-10 days. This gives our clients peace of mind that their man riding winches are fully certified and safe for use offshore.

Due to our committment and investment in stocking OEM spare parts, we can repair, overhaul and re-certify both old and new models of Ingersoll Rand utility winches. This not only extends the life of our clients hard working utility winches, it assures them of continued optimum performance of critical offshore equipment.

DRI France

DRI is specialized in the fields of fluid transfer and lifting in industrial environments such as: Chemicals, Petrochemicals and Oil & Gas. We offer a wide range of pumping units as well as pneumatic and hydraulic winches and hoists.

In addition, we perform maintenance on all types of pumping and lifting equipment as well as on-site installations . Our competence and expertise in the field of fluid transfer and lifting make DRI a valued partner for our customers, both regional and national.



DRI offers a wide range of hoists and winches all to ATEX standards, as well as a wide range of accessories including motorised trolley, manual trolley, feed spirals and also special certificates and special paints depending on the environment. All of our accessories and options are tailored specifically to the customer's request.



DRI is a specialist supplier of pumping equipment. Our extensive selection of pumps have excellent qualities of self-priming and ease of maintenance along with many of our pumps being portable and easy to install.

DRI also provides a quality service of installation and repair of pumps and agitators backed by a highly qualified team of engineers.

